



**Neubau MFH Haus B
Parz. Nr. 268, Wilerstrasse
9542 Münchwilen**



9553 bettwiesen
071/ 911 19 60
info@baumeier.ch
www.baumeier.ch

generalunternehmung

Variante 6
10. Juni 2022/mm



Südost Perspektive



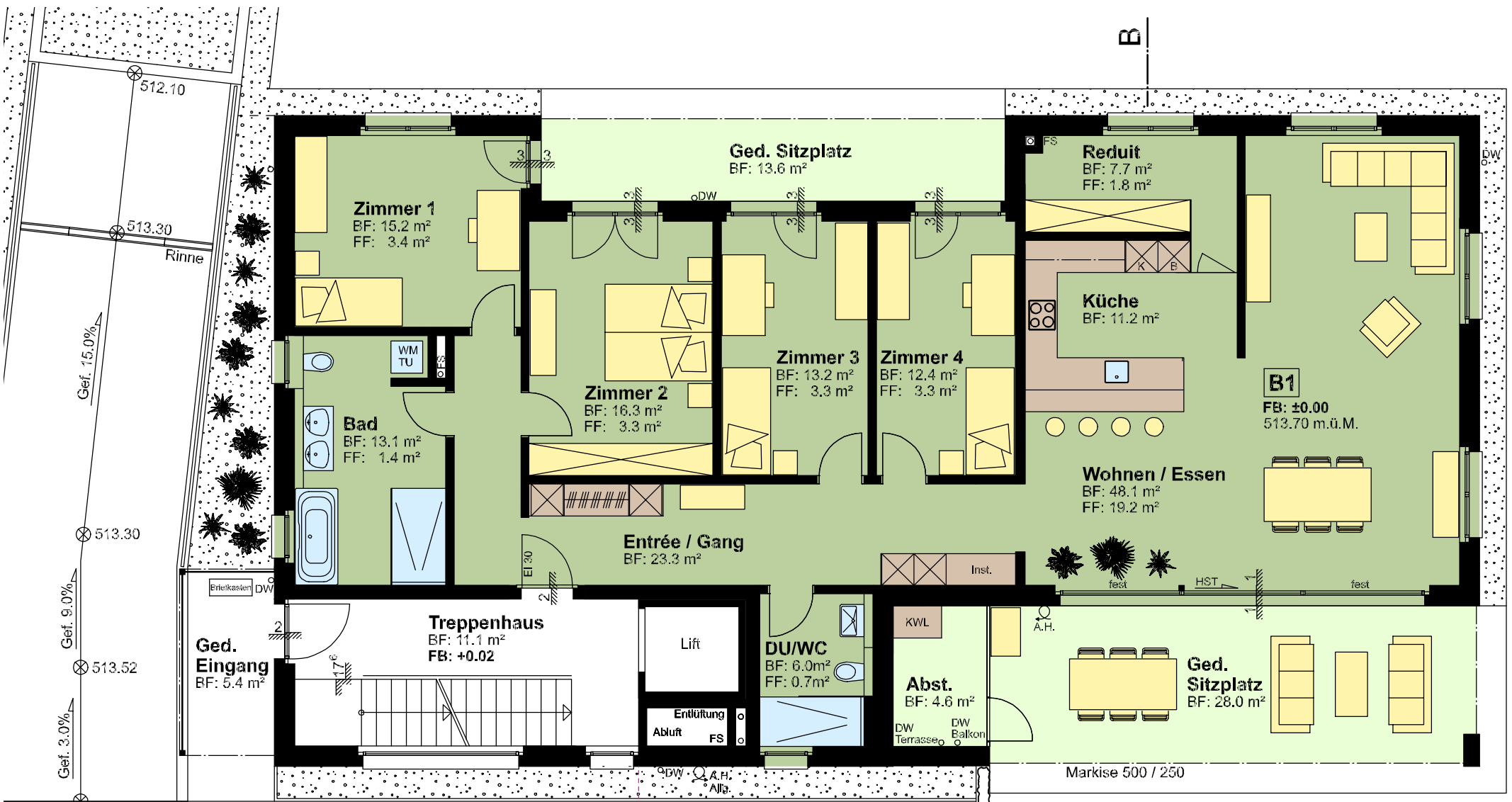
Nordwest Perspektive



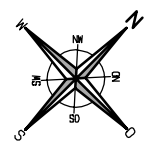
3



Südwest Perspektive

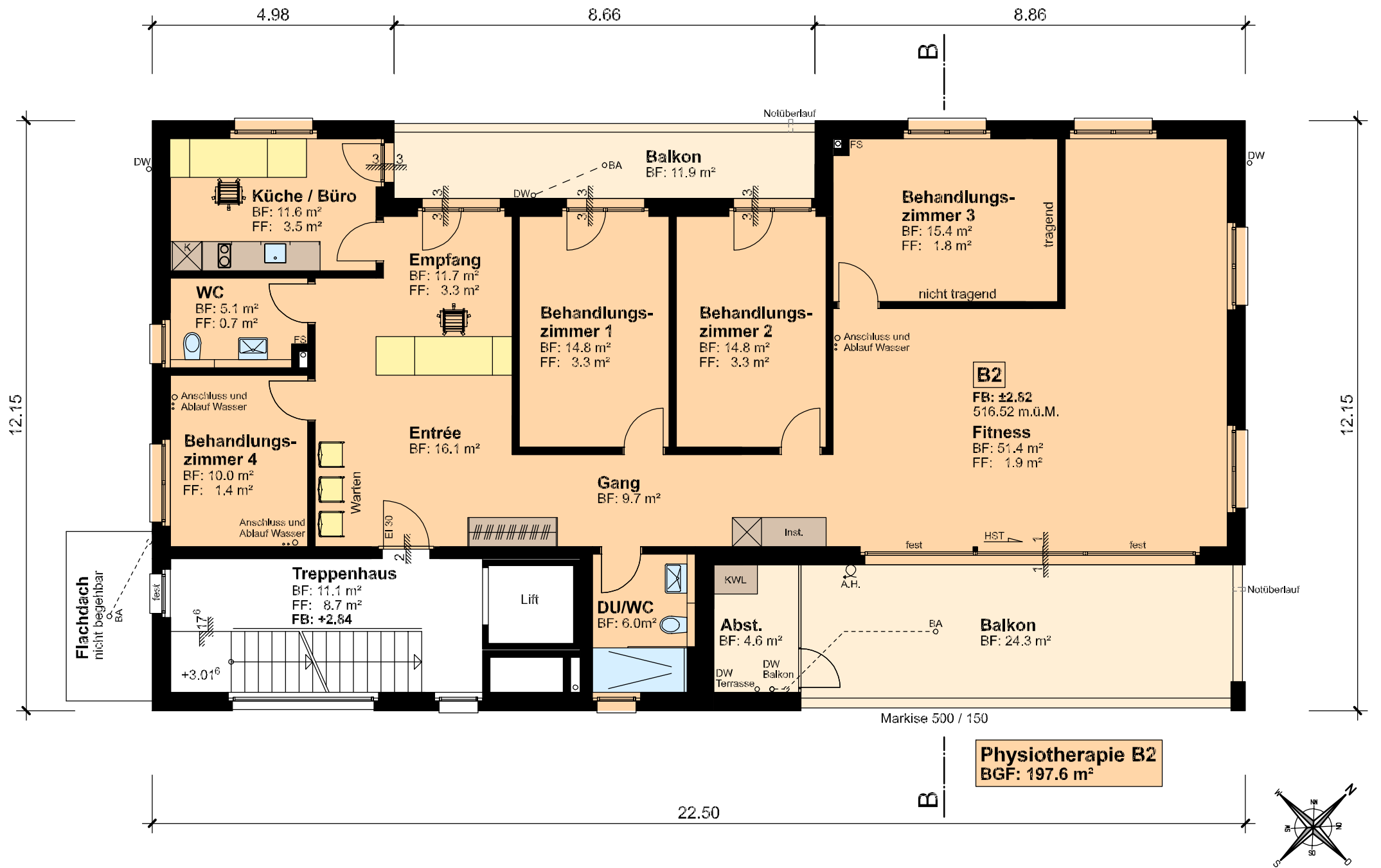


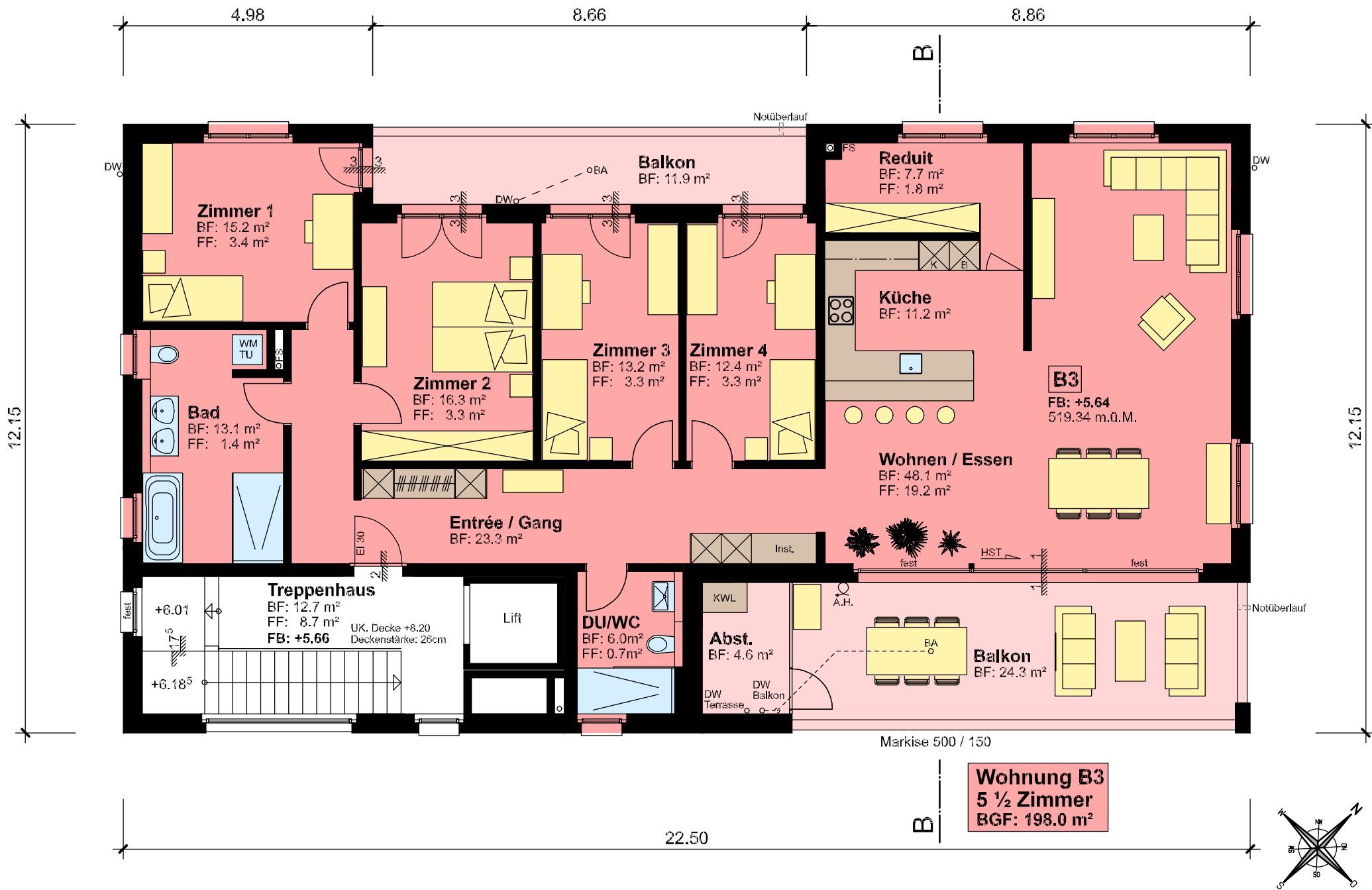
Wohnung B1
5 ½ Zimmer
BGF: 198.0 m²

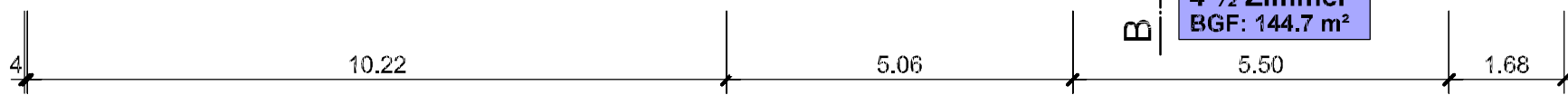
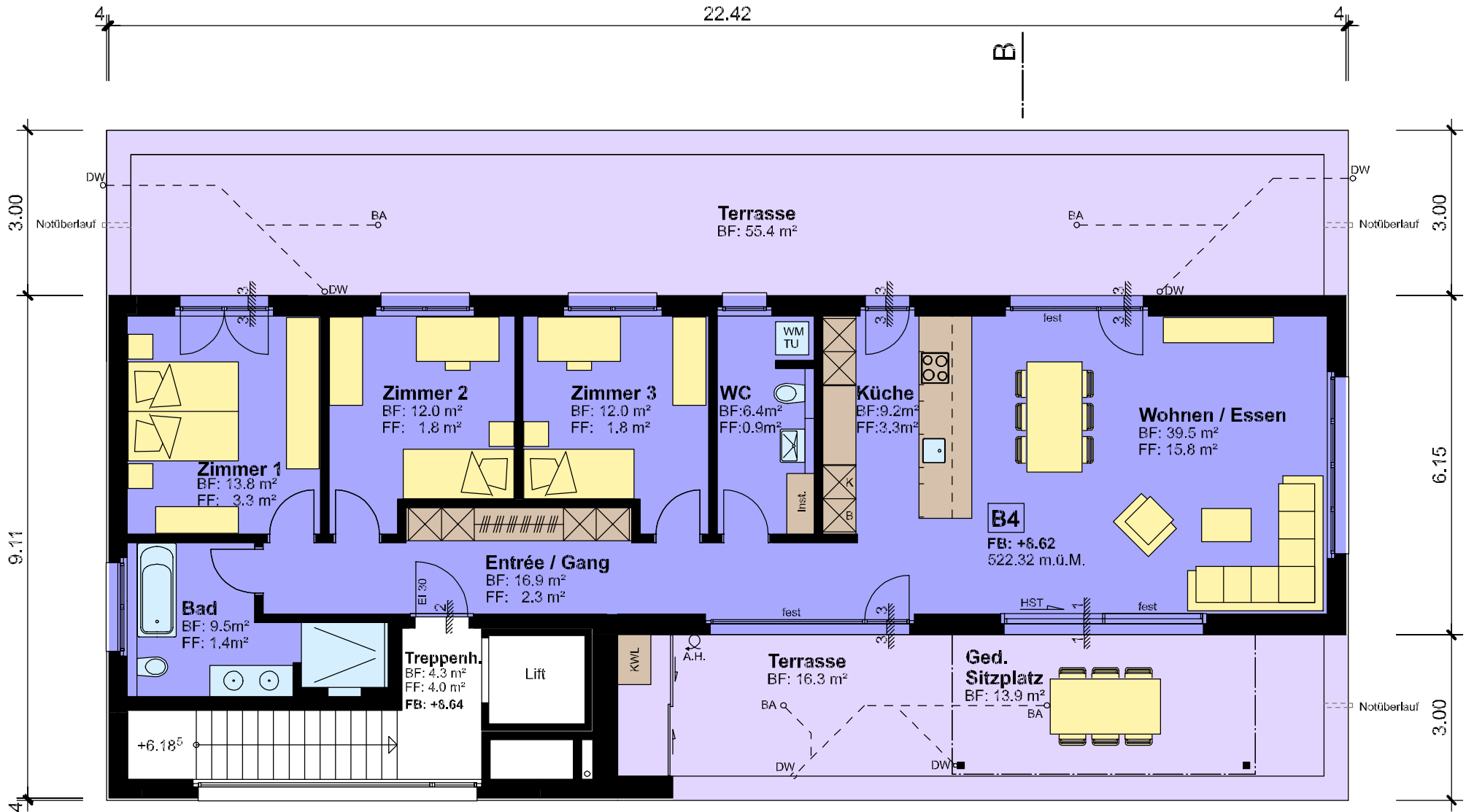


Erdgeschoss Haus B 1:100

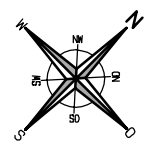


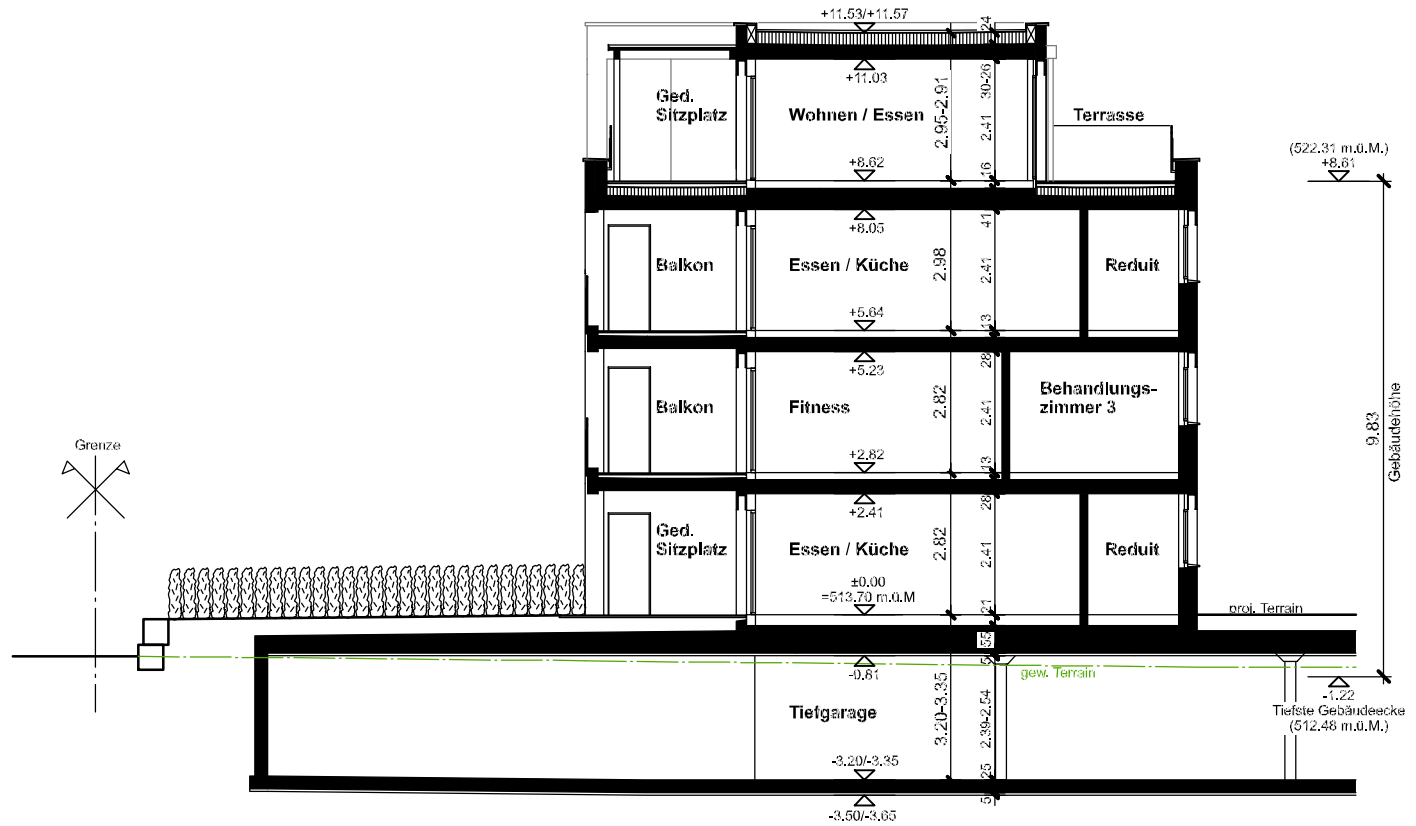




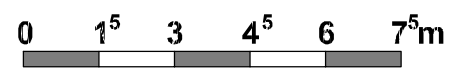


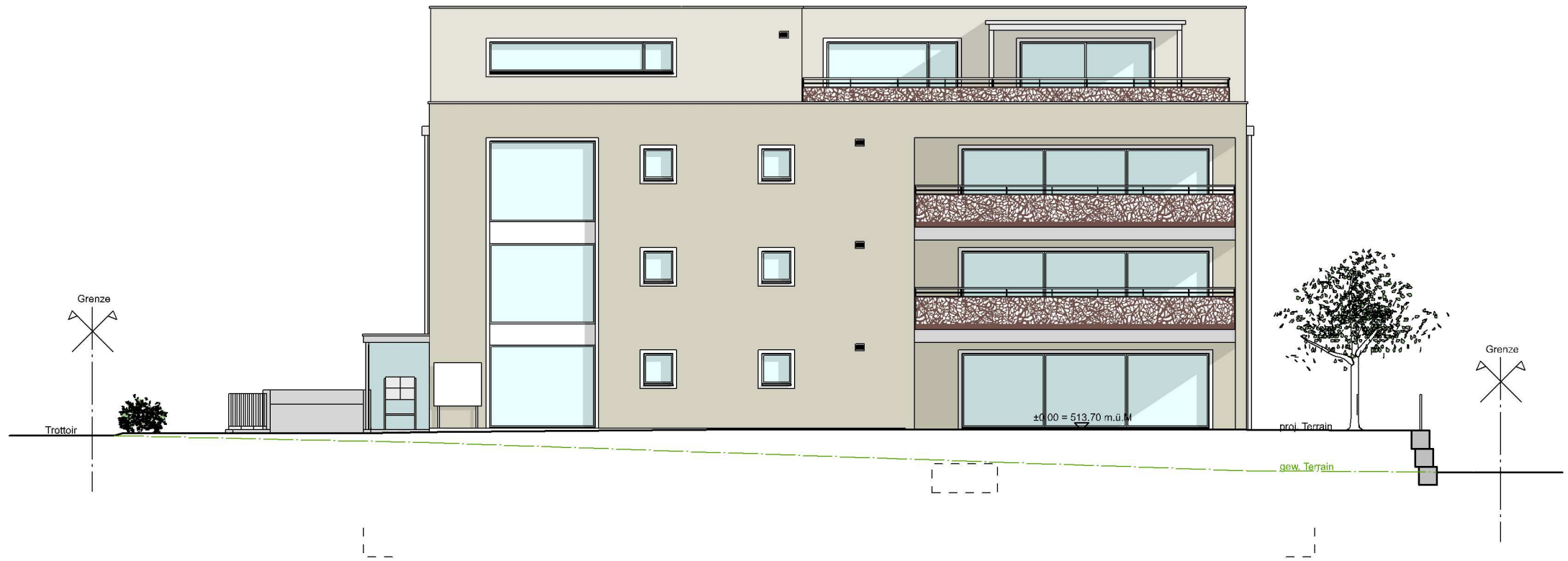
Wohnung B4
4 ½ Zimmer
BGF: 144.7 m²



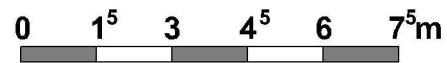


Schnitt B-B Haus B 1:150





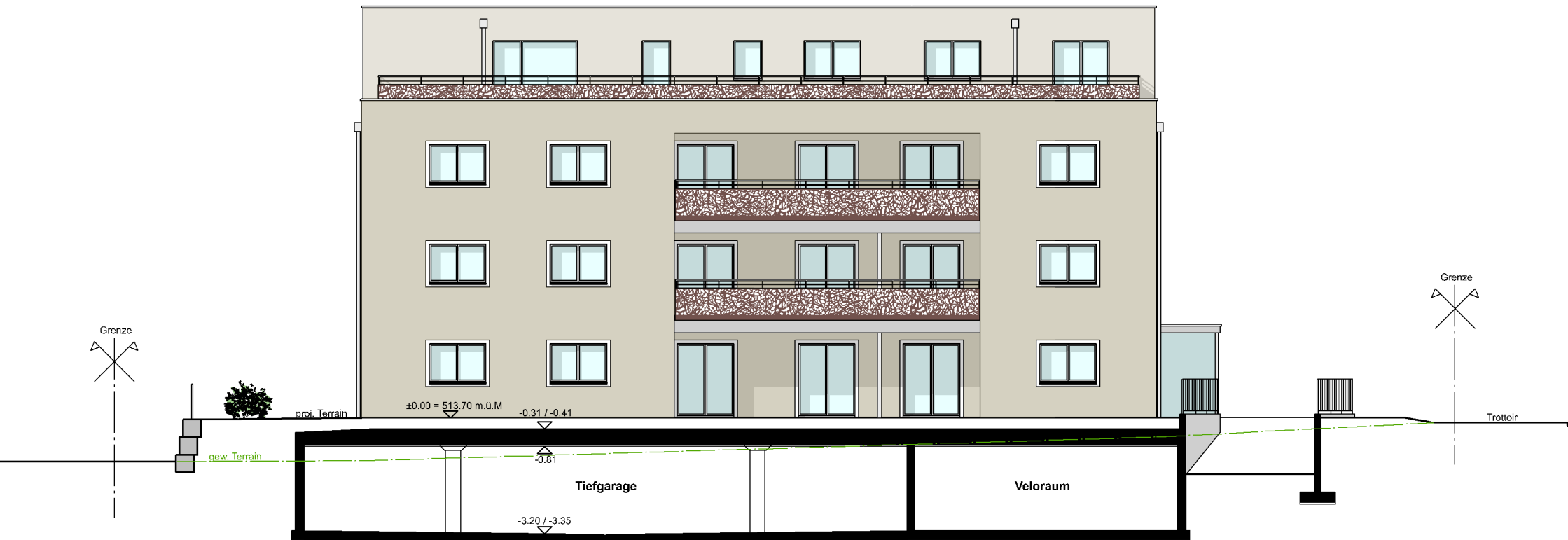
Südostfassade Haus B 1:150





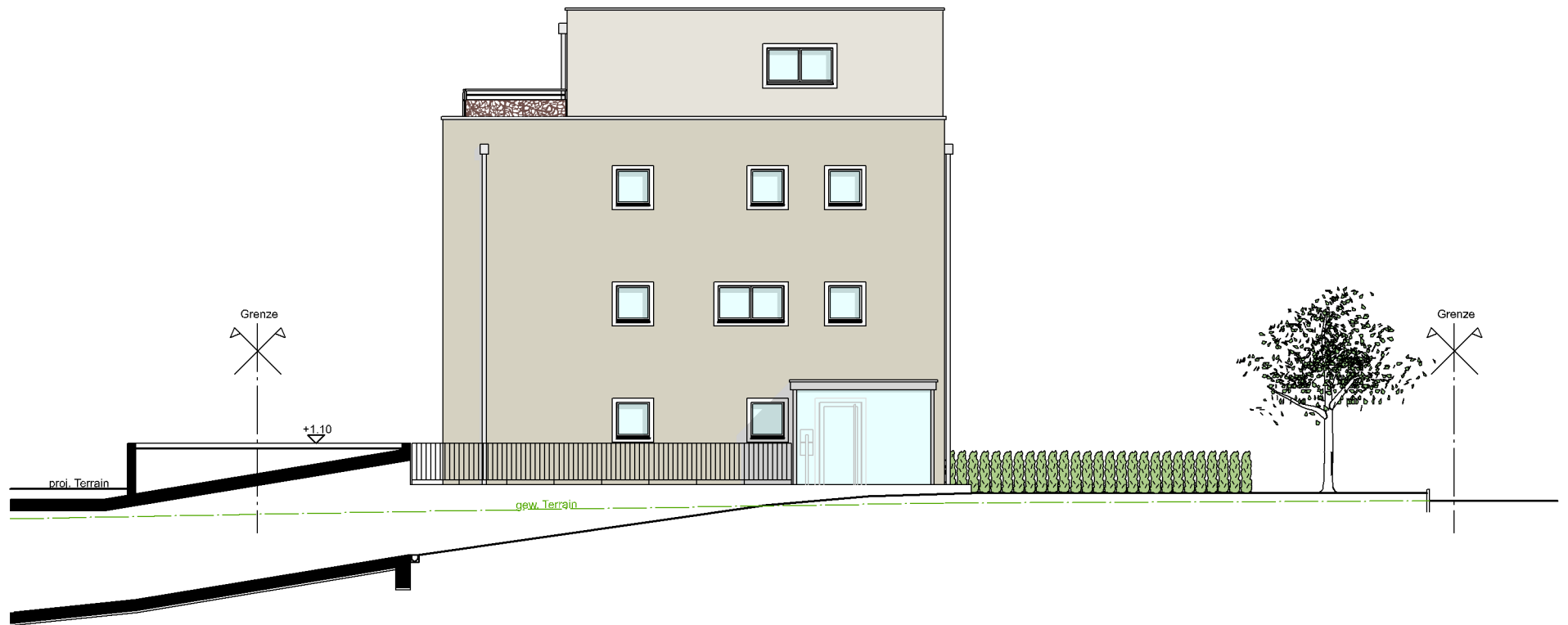
Nordostfassade Haus B 1:150





Nordwestfassade Haus B 1:150





Südwestfassade Haus B 1:150

