



**Neubau MFH
Gartenstrasse 20
9542 Münchwilen**



9553 bettwiesen
071/ 911 19 60
info@baumeier.ch
www.baumeier.ch

generalunternehmung

Variante 7
04. April 2023 / se



Nordwest Perspektive



2



Parz. Nr. 2094
Alfred & Arneliese Sutter-Stöcker Stiftung
Gartenstrasse 14
9542 Münchwilen

Parz. Nr. 2433
Benedikt & Brigitta Marig
Eschlikonersrasse 16
9542 Münchwilen

Abbruch best. Gebäude
Neubau MFH
±0.00 = ca. 512.30 m² M.M.

Parz. Nr. 2095
Landflächler ca. 781 m²
Stephanie & Erika Bede
Toblerstrasse 7
9542 Münchwilen
Evel Meier Bau AG
Hauptstrasse 24
8502 Bubikon

Parz. Nr. 2096
Genossenschaft EW Münchwilen
Im Zentrum 4
9542 Münchwilen
Sichtbrenne Strasse
Kreuzsichtweite 30.0 m

Parz. Nr. 2109
Gartenstrasse
Politische Gemeinde Münchwilen
Im Zentrum 4
9542 Münchwilen

Parz. Nr. 2110

Parz. Nr. 2505

Parz. Nr. 2507

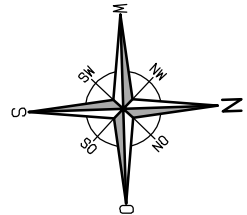
Parz. Nr. 2111

Parz. Nr. 2112

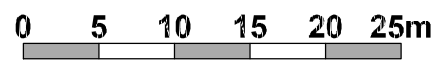
Parz. Nr. 2113

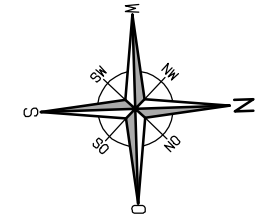
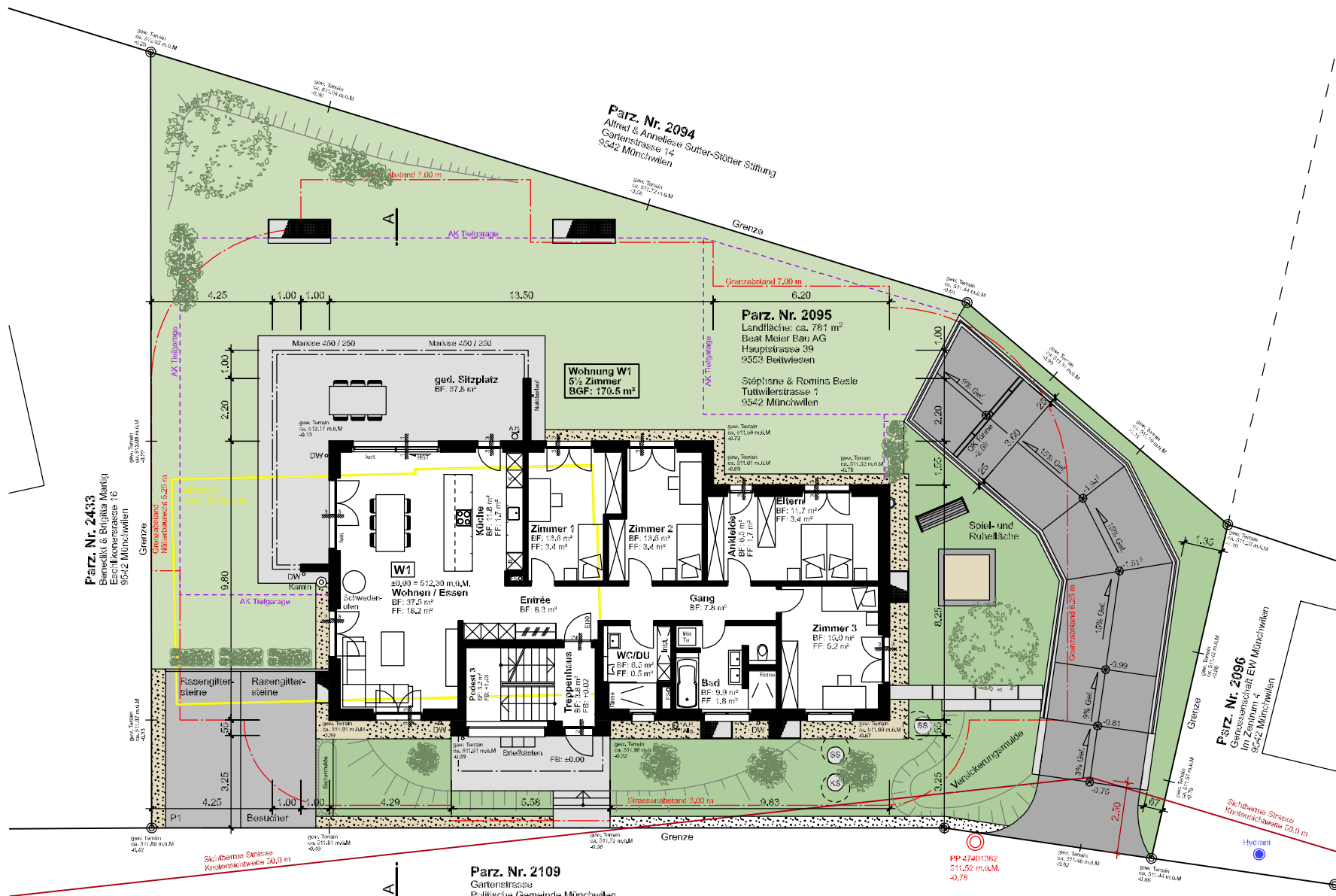
Parz. Nr. 2524

- Legende:**
- Neu
 - Abbruch



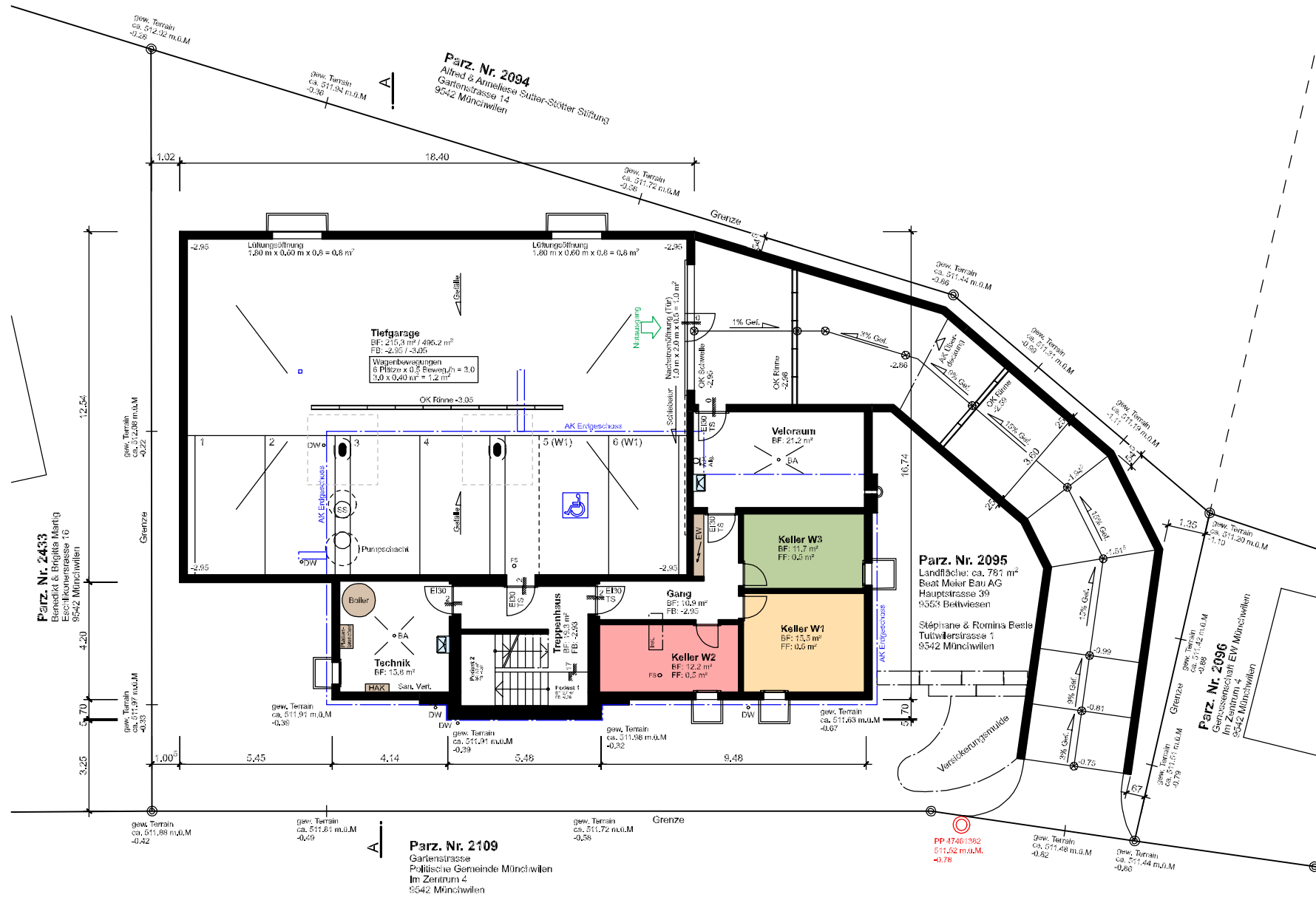
Situation 1:500



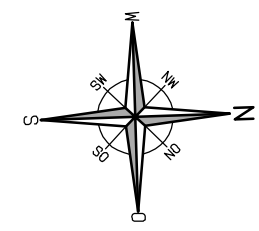


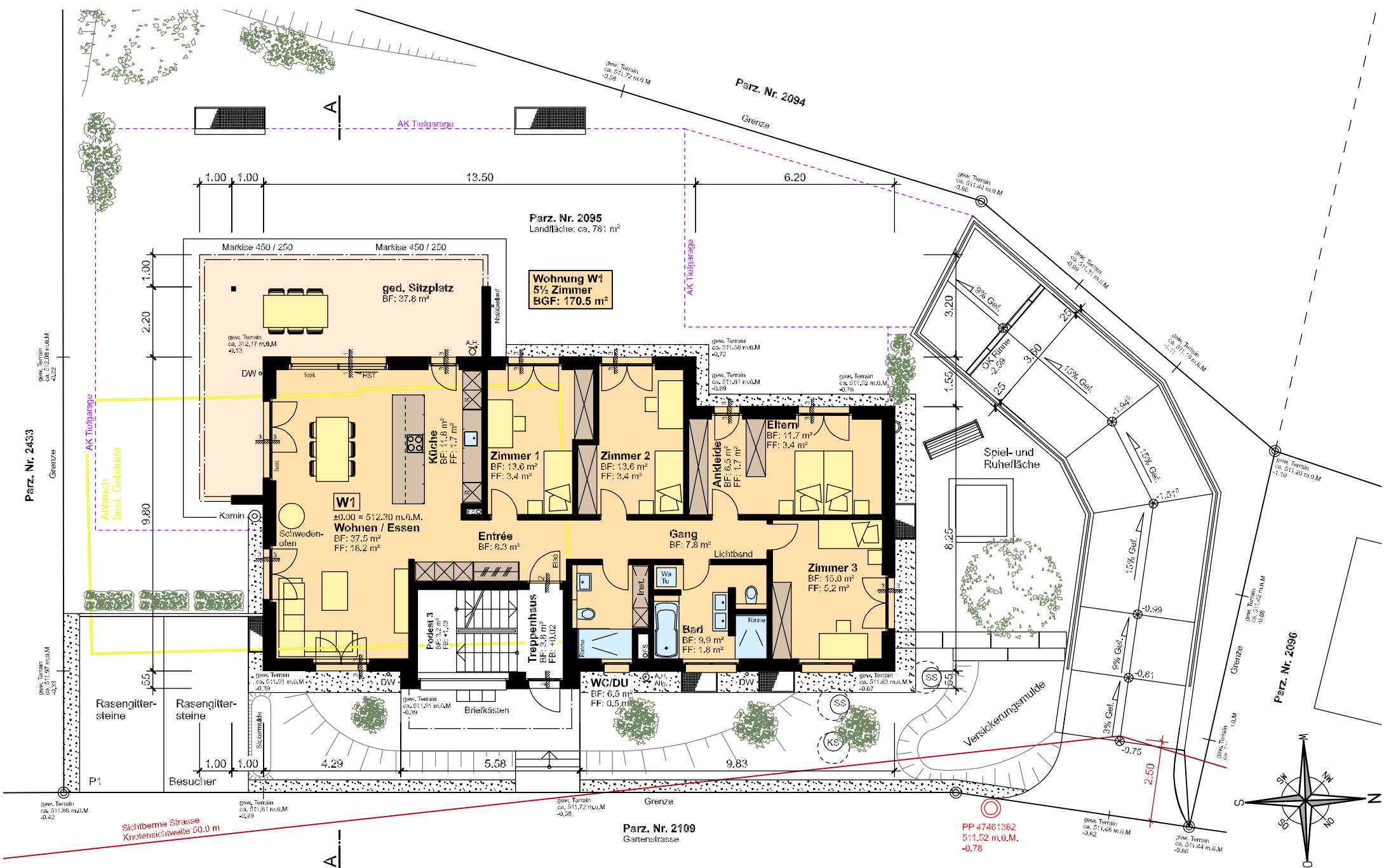
Umgebung 1:200



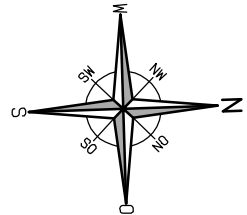


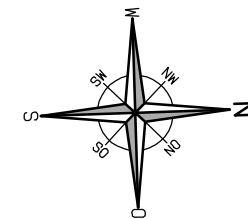
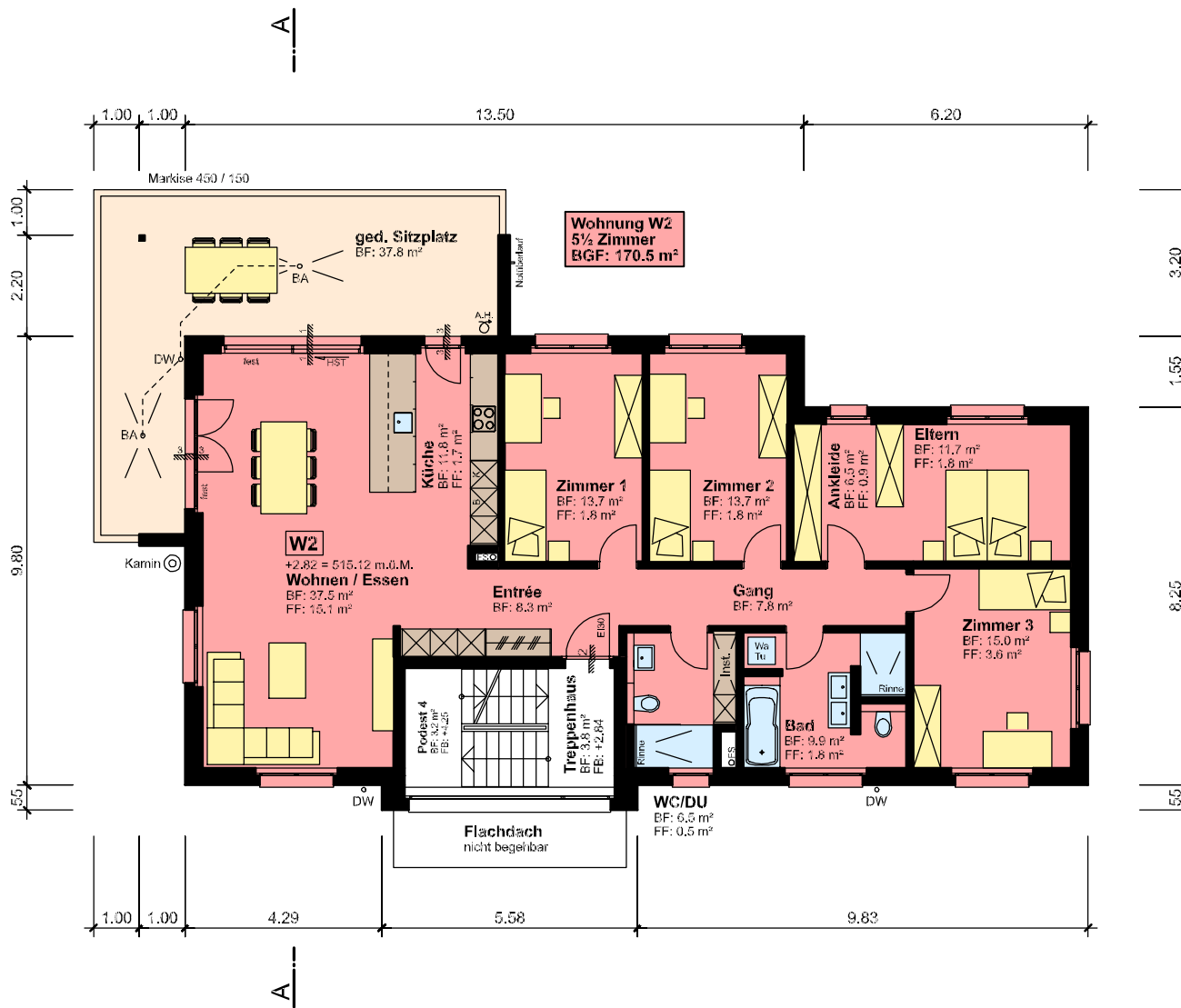
Tiefgarage 1:200





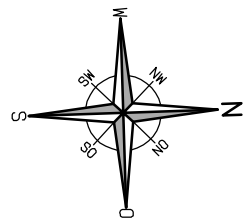
Erdgeschoss 1:150



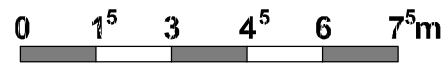


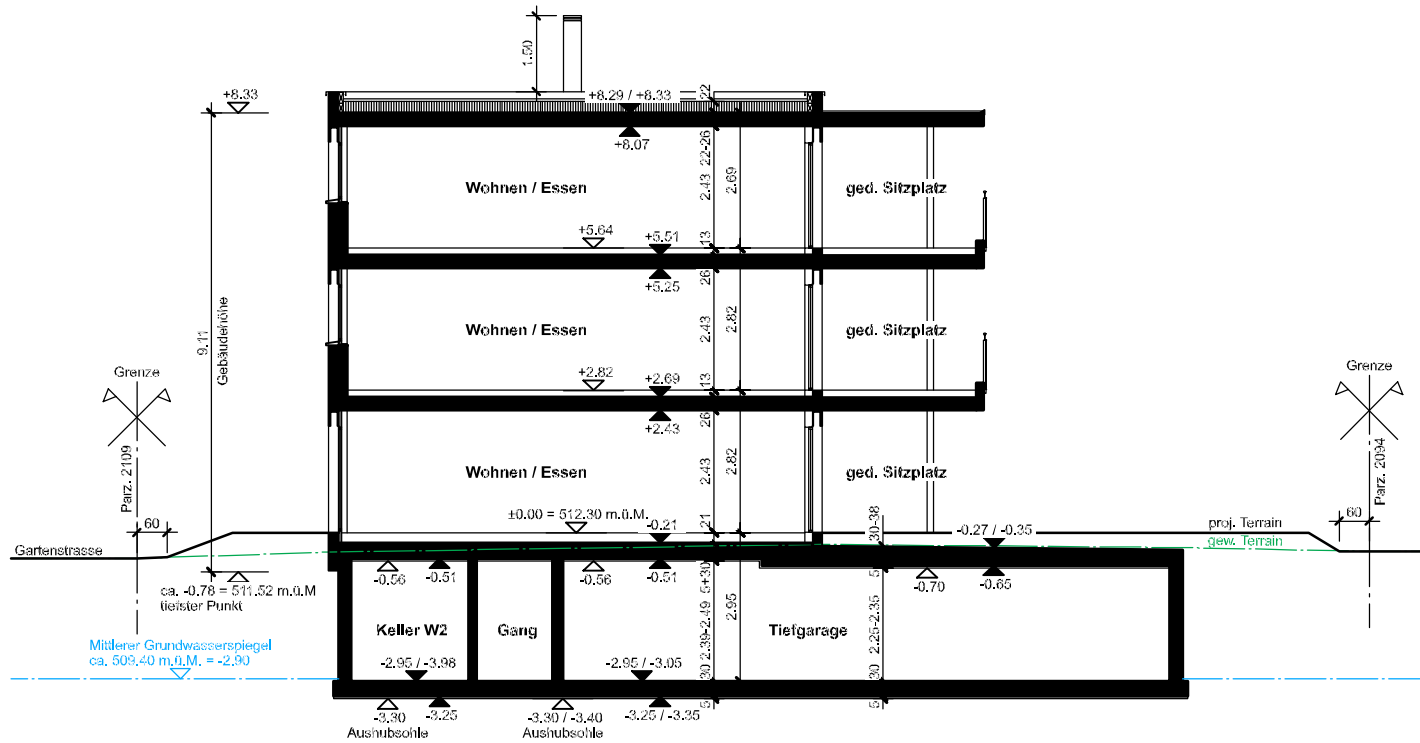
1. Obergeschoss 1:150



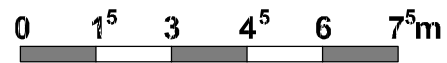


2. Obergeschoss 1:150



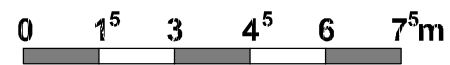


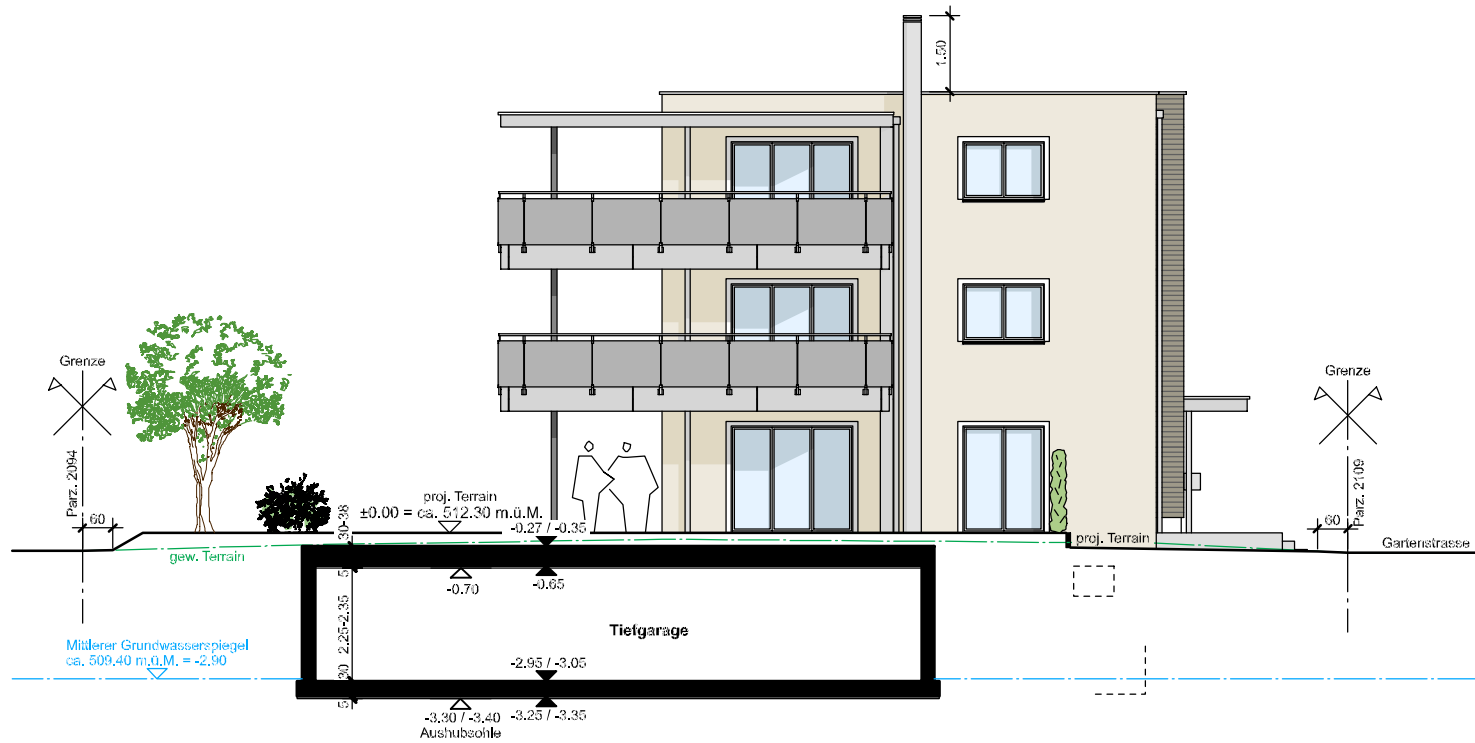
Schnitt A-A 1:150





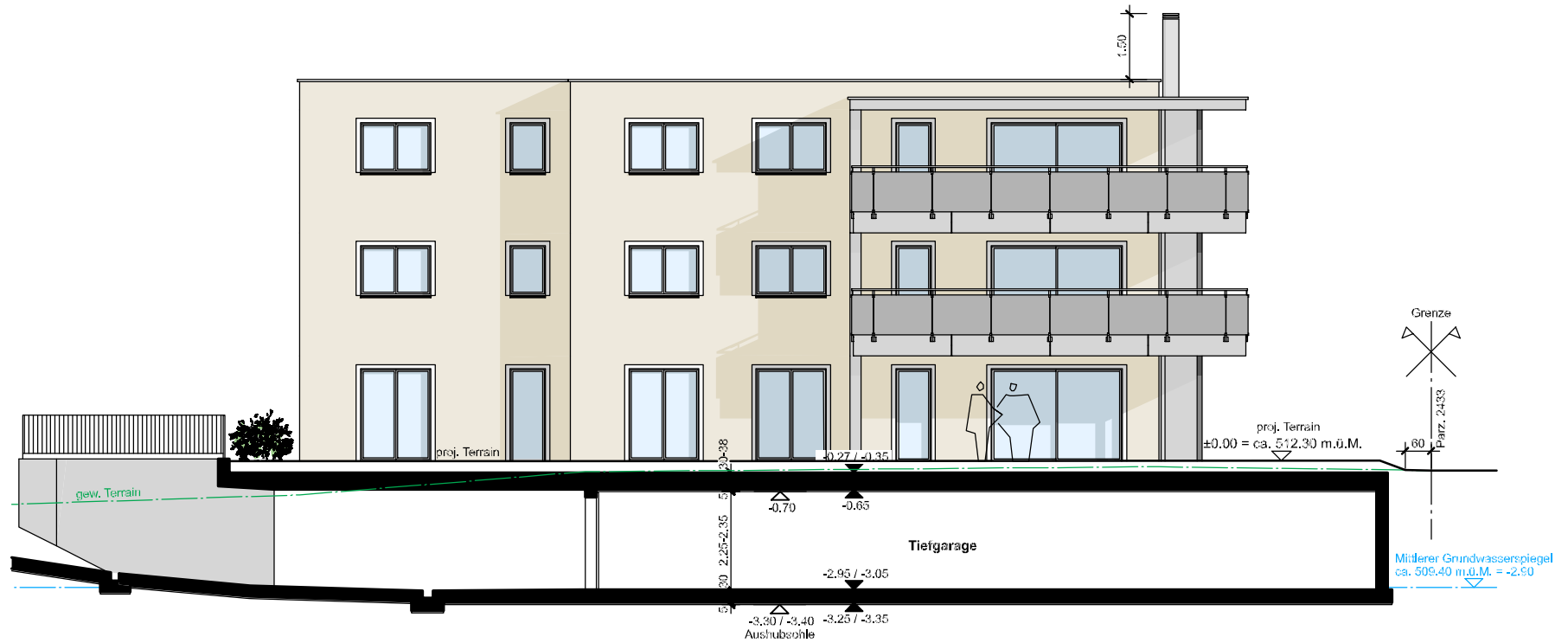
Ostfassade 1:150



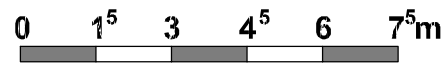


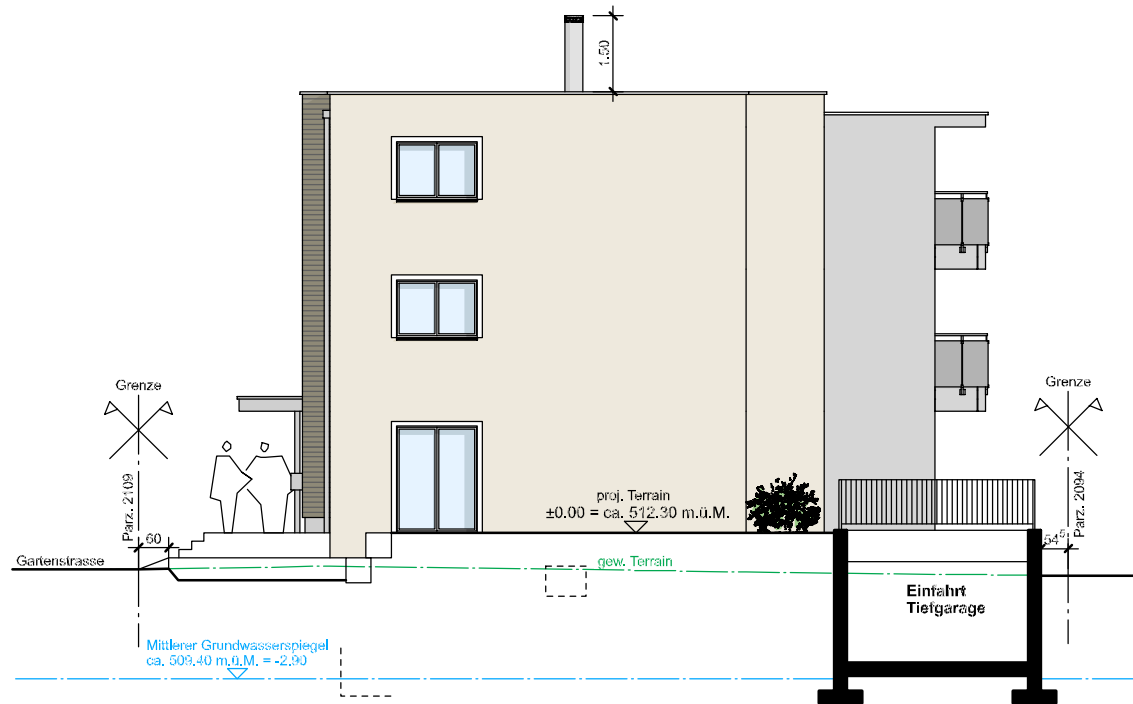
Südfassade 1:150





Westfassade 1:150





Nordfassade 1:150

