



**Neubau MFH R. Müller
Mezikonerstrasse
9542 Münchwilen**



9553 bettwiesen
071/ 911 19 60
info@baumeier.ch
www.baumeier.ch

generalunternehmung

Variante 1
2. Juni 2022 / se



West Perspektive



Nord Perspektive



3

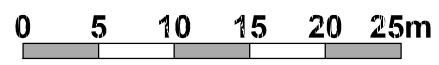
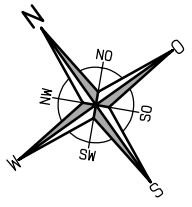


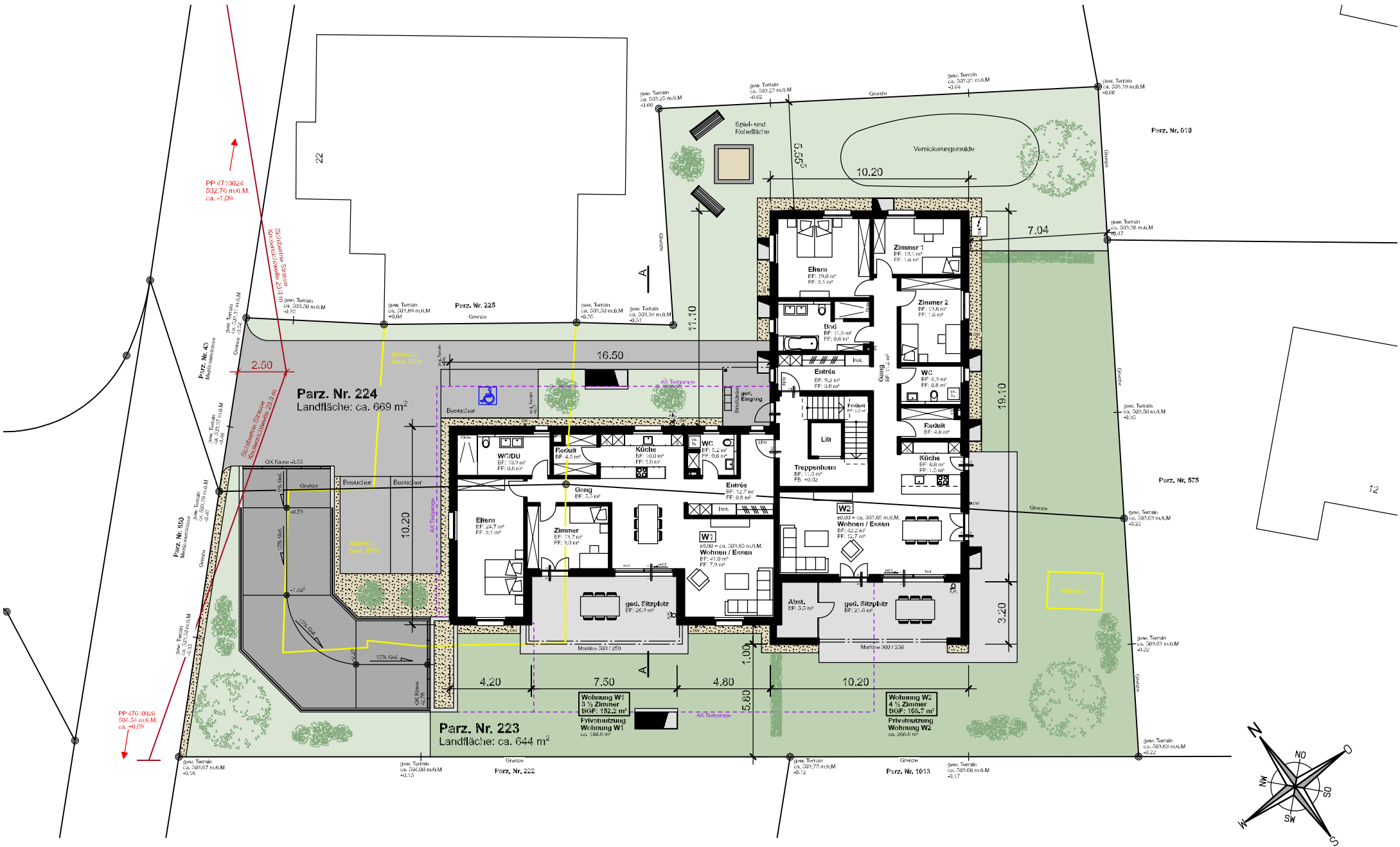
Legende:

- Neu
- Abbruch

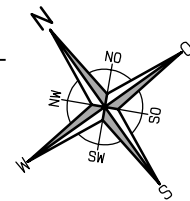
⊙ PP 47461408
504.04 m.ü.M.
ca. +0.69

⊙ PP 47461407
503.65 m.ü.M.
ca. -0.20





Umgebung 1:250



PP 4710024
502,76 m.ö.M.,
ca. -1,09

Parz. Nr. 619

Parz. Nr. 225
Grenze

Parz. Nr. 224
Landfläche: ca. 609 m²

Parz. Nr. 575

Parz. Nr. 223
Landfläche: ca. 644 m²

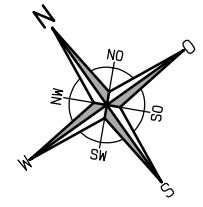
Parz. Nr. 222
Grenze

Parz. Nr. 1013
Grenze

Parz. Nr. 850
Mischverkehrszone

Parz. Nr. 43
Mischverkehrszone

PP 47610026
504,53 m.ö.M.,
ca. +0,69

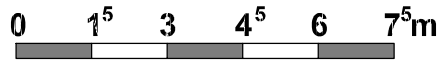


Tiefgarage 1:200



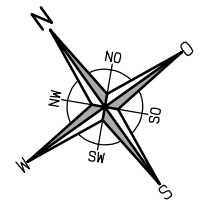


Erdgeschoss 1:150





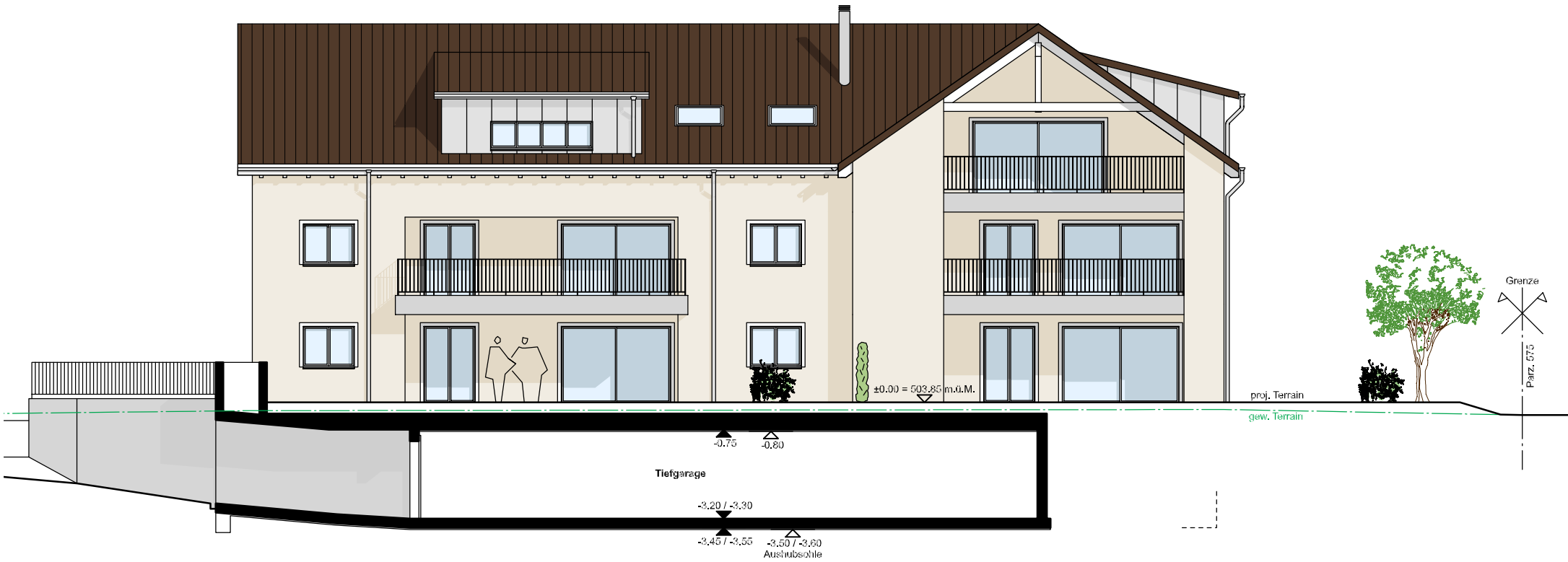
Obergeschoss 1:150





Südostfassade 1:150



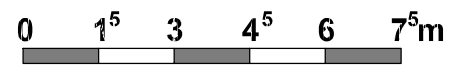


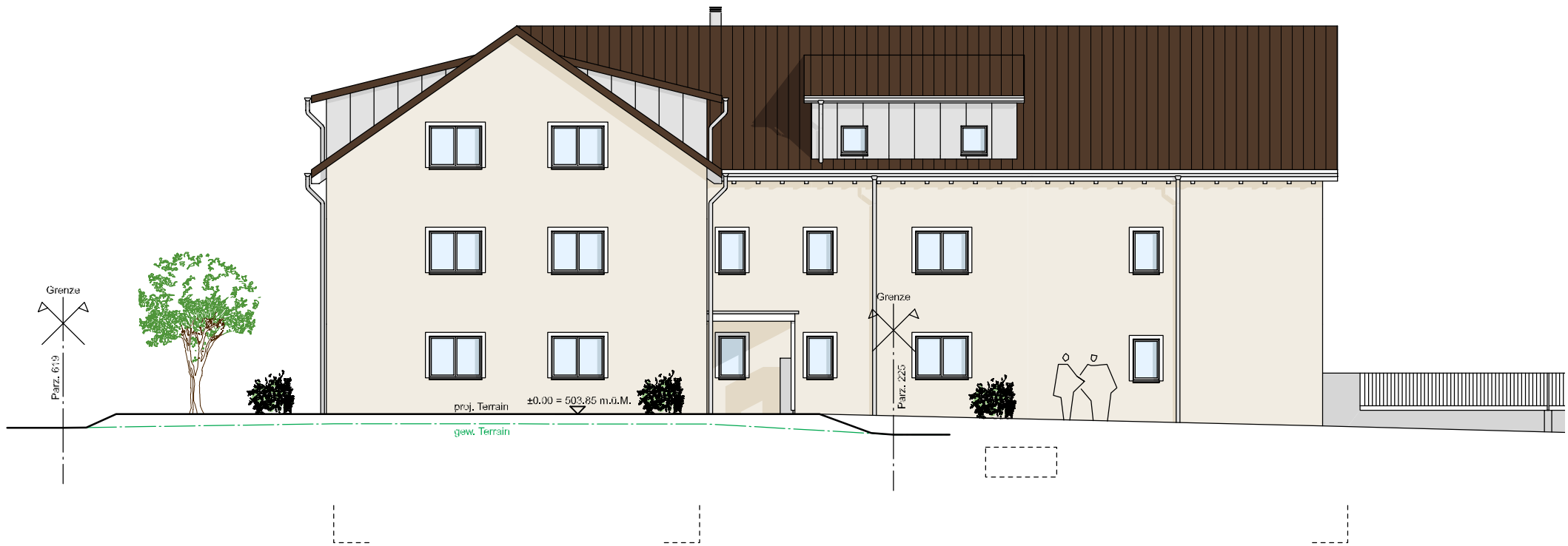
Südwestfassade 1:150





Nordwestfassade 1:150





Nordostfassade 1:150

