



**Neubau MFH Anetswil
Anetswilerstr. 26, Parz. 3145
9545 Wängi**



9553 bettwiesen
071/ 911 19 60
info@baumeier.ch
www.baumeier.ch

generalunternehmung

Variante 5
13. März 2024 / se



Nord Perspektive



2

Parz. Nr. 3043

Parz. Nr. 3044
Politische Gemeinde Wängi
Steinlerstrasse 2
9545 Wängi

Parz. Nr. 3602

Parz. Nr. 3144
Patrick Grüfner & Bettina Lieberherr
Rütschbergstrasse 6
8363 Bichelsee

Parz. Nr. 3143

Parz. Nr. 3497

Politische Gemeinde Wängi
Steinlerstrasse 2
9545 Wängi

Parz. Nr. 3524
Anetswilerstrasse

Parz. Nr. 3157
Anetswilerstrasse

Parz. Nr. 3145
Landfläche ca. 888m²
(D: ca. 511m²/Lw: ca. 377m²)
Beat Meier Bau AG
Hauptstrasse 39
9553 Bettwiesen

Parz. Nr. 3164

Parz. Nr. 3465

Parz. Nr. 3614

Parz. Nr. 3155

PP 47810448
-0.63 = 519.47 m.ü.M.

Parz. Nr. 3162
Moeschilweg

Parz. Nr. 1515

Parz. Nr. 3316
Moeschilweg

Parz. Nr. 1505

27

29

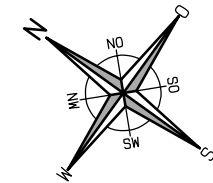
25

2

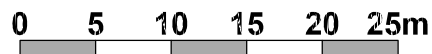
23

Legende:

- Neu
- Abbruch



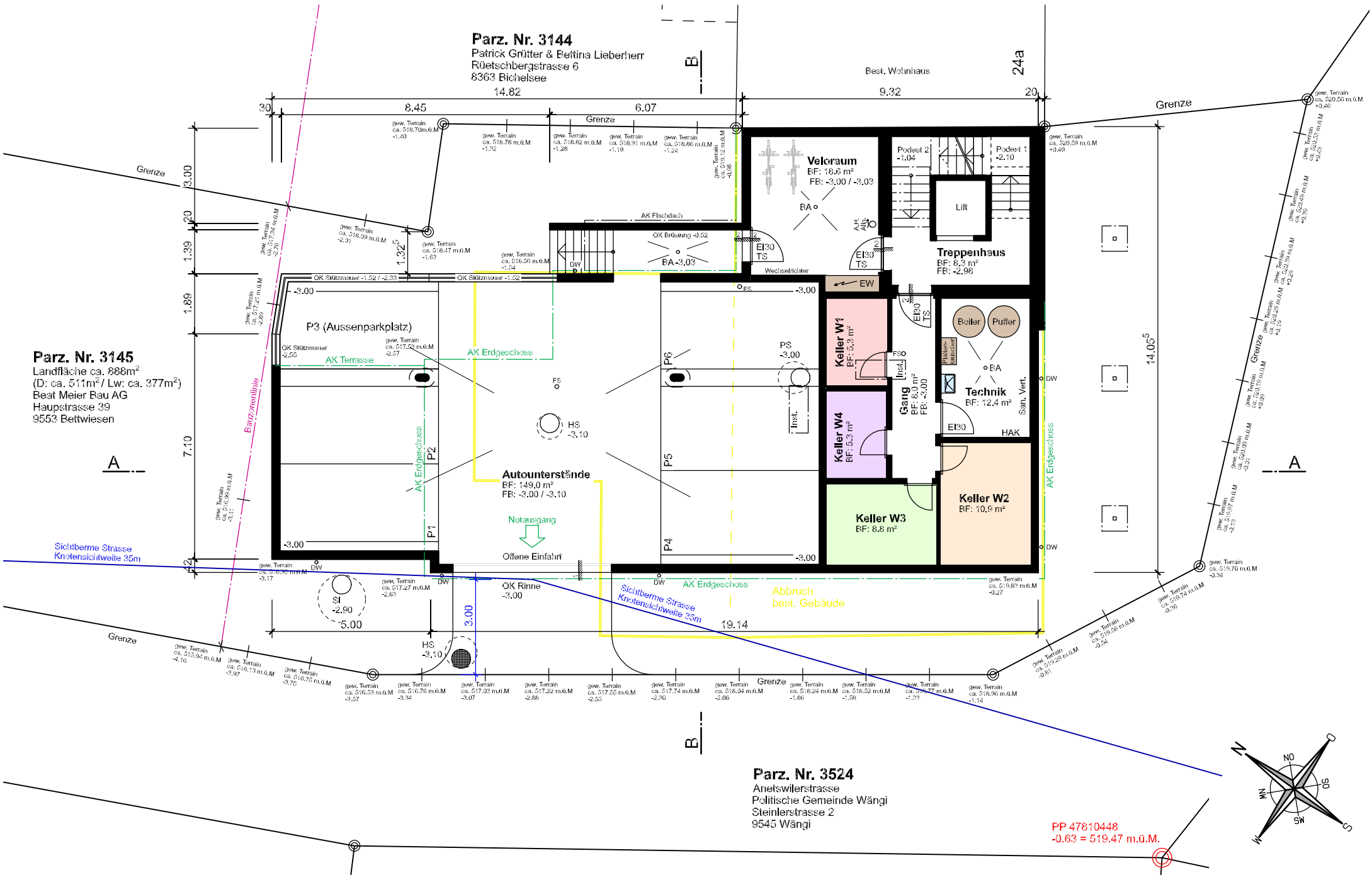
Situation 1:500



Parz. Nr. 3144
 Patrick Grütter & Beffina Lieberherr
 Rüetschbergstrasse 6
 8363 Bichelsee

Parz. Nr. 3145
 Landfläche ca. 888m²
 (D: ca. 511m² / Lw: ca. 377m²)
 Beat Meier Bau AG
 Hauptstrasse 39
 9553 Bettwiesen

Parz. Nr. 3524
 Anetswilerstrasse
 Politische Gemeinde Wängi
 Steinerstrasse 2
 9545 Wängi



PP 47810448
 -0.63 = 519.47 m.ü.M.

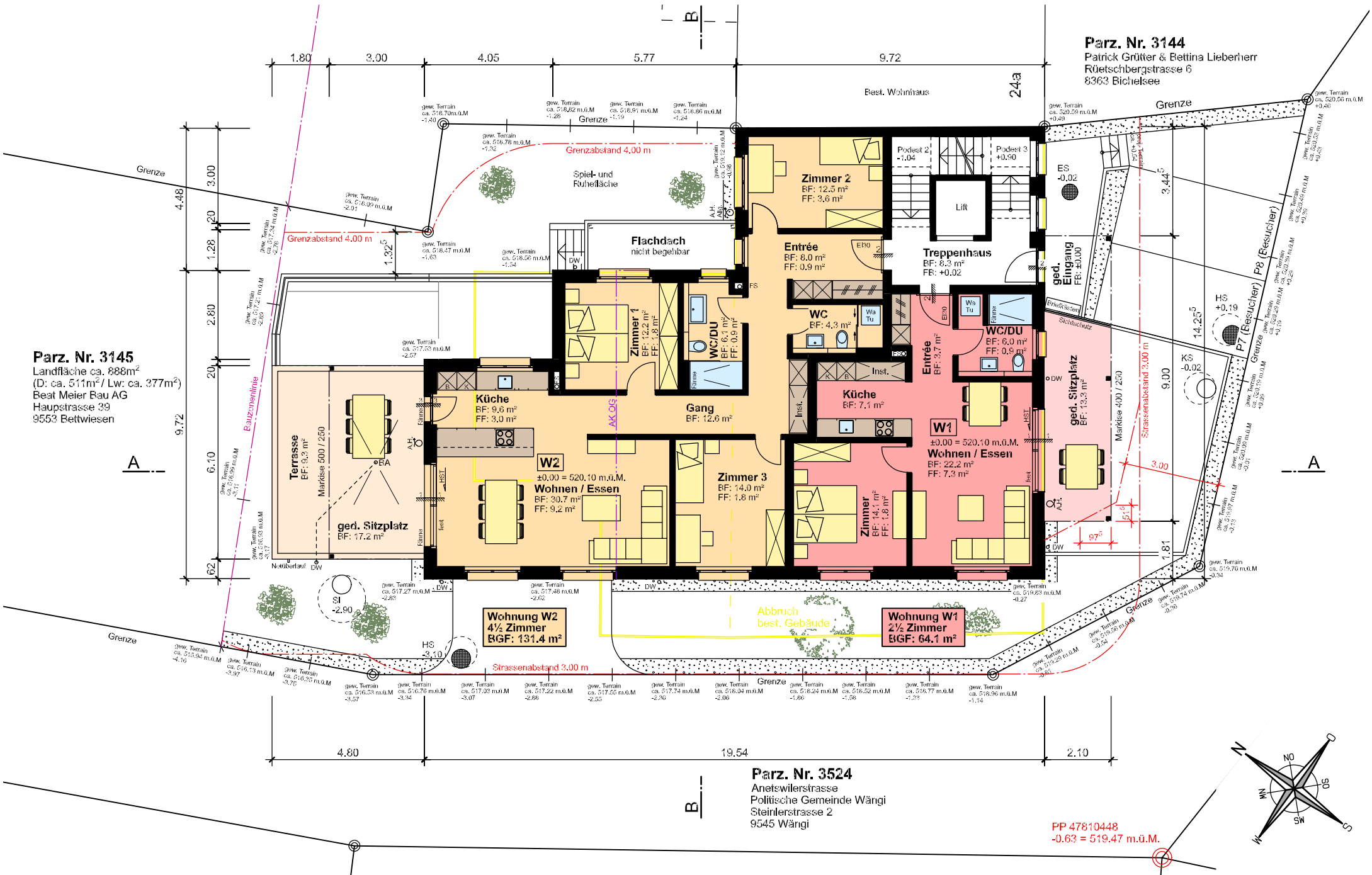
Untergeschoss 1:150



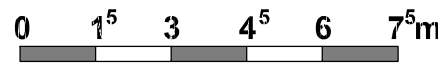
Parz. Nr. 3145
 Landfläche ca. 888m²
 (D: ca. 511m²/ Lw: ca. 377m²)
 Beat Meier Bau AG
 Hauptstrasse 39
 9553 Bettwiesen

Parz. Nr. 3144
 Patrick Grütter & Bettina Lieberherr
 Rüetschbergstrasse 6
 8363 Bichelsee

Parz. Nr. 3524
 Anetswilerstrasse
 Politische Gemeinde Wängi
 Steinerstrasse 2
 9545 Wängi

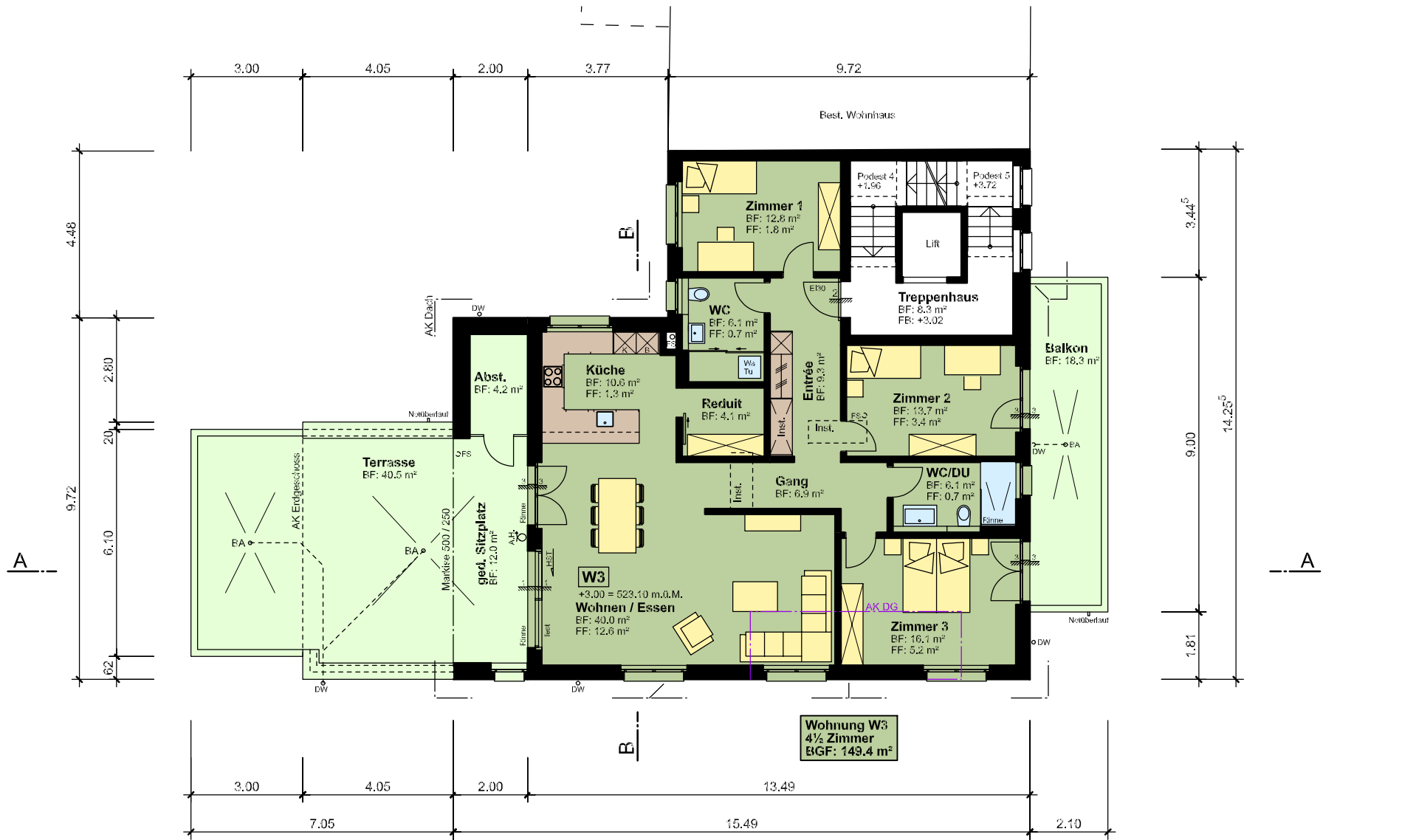


Erdgeschoss 1:150

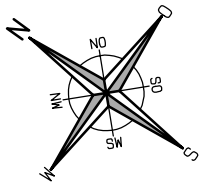
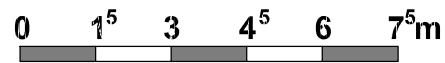


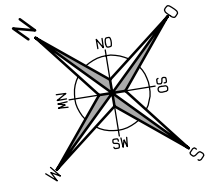
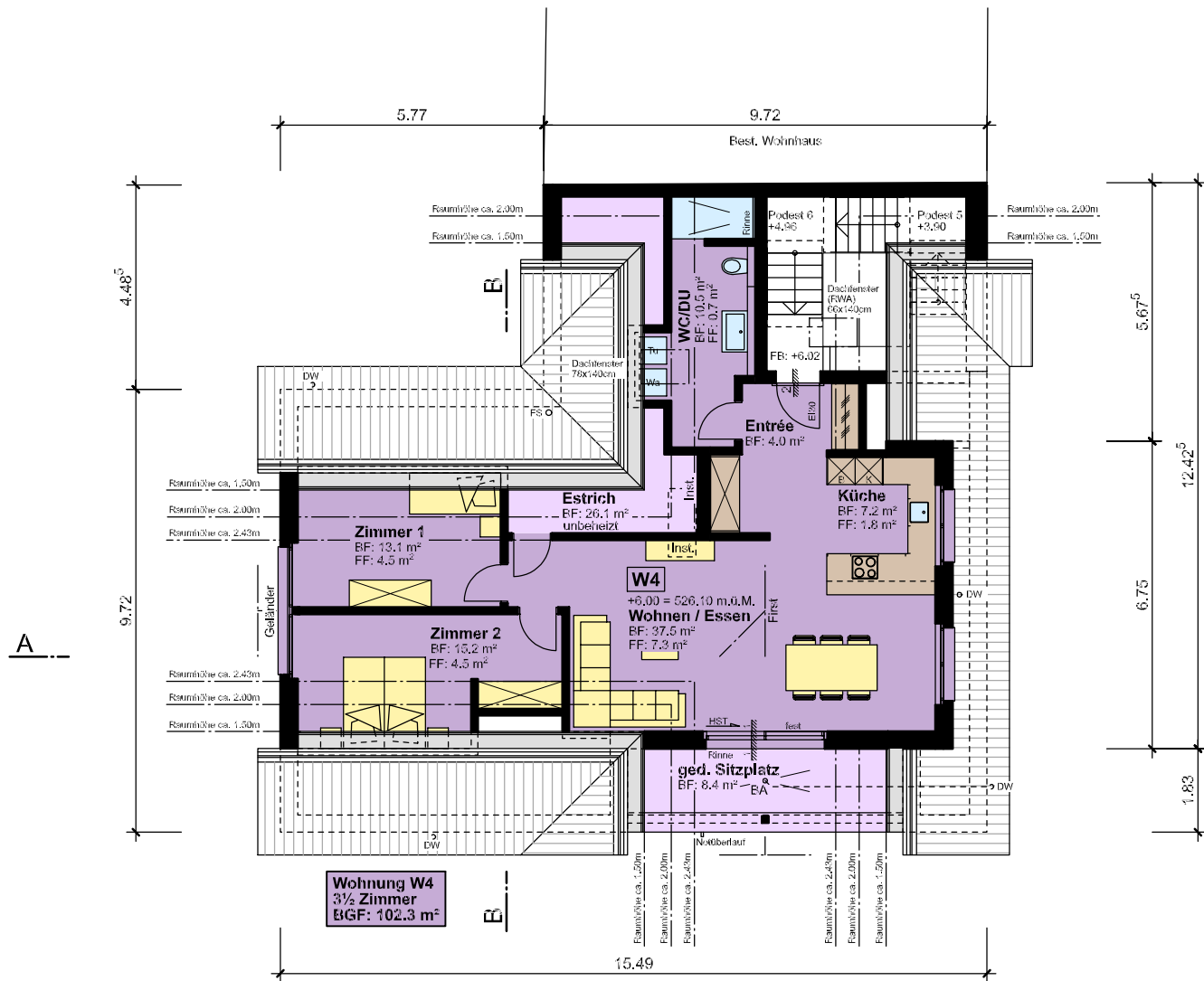
PP 47810448
 -0.63 = 519.47 m.o.M.





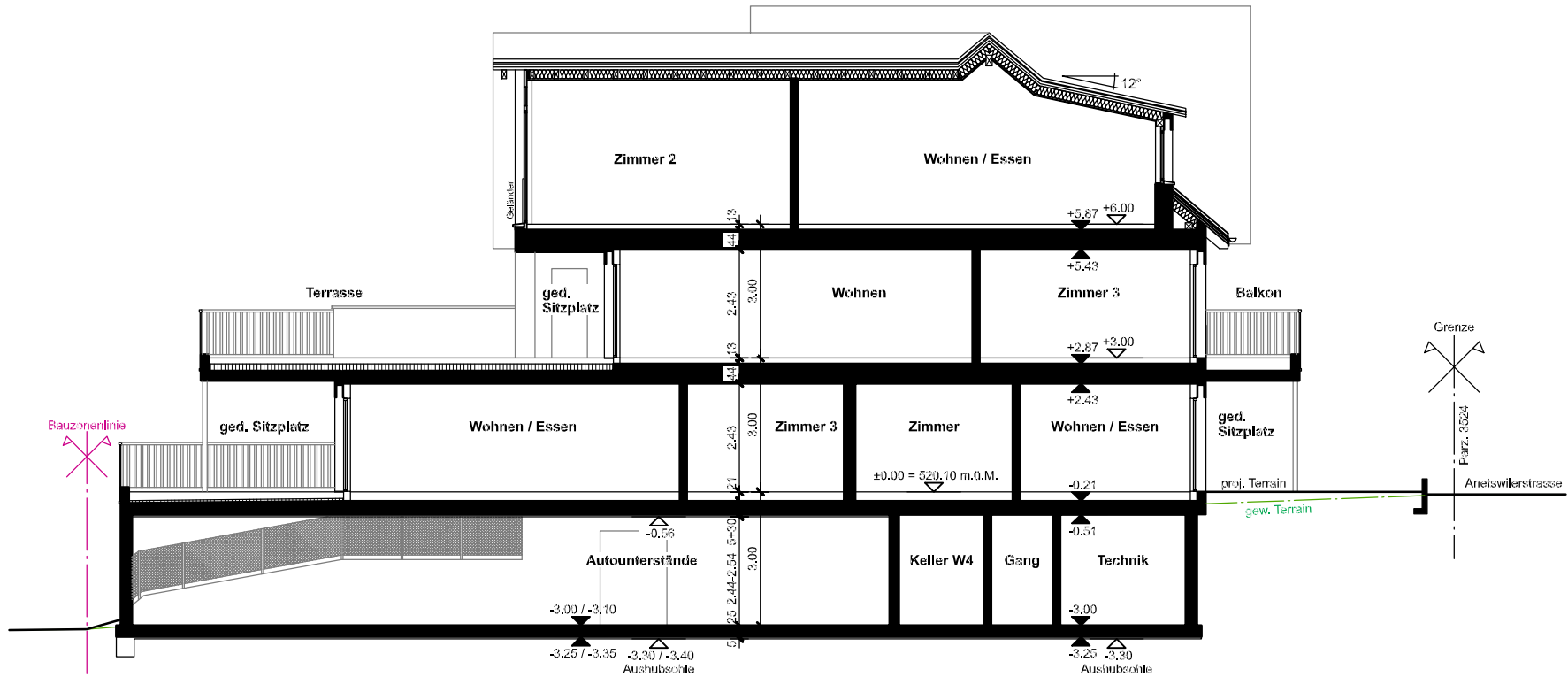
Obergeschoss 1:150



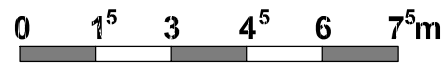


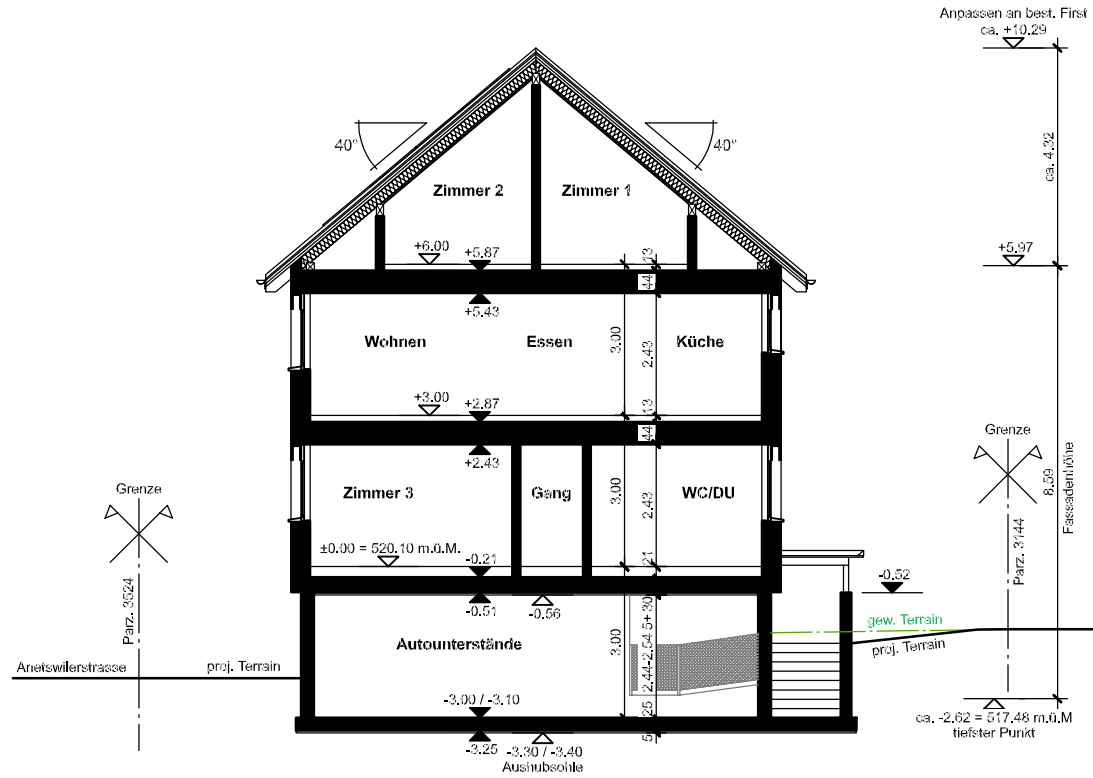
Dachgeschoss 1:150





Schnitt A-A 1:150



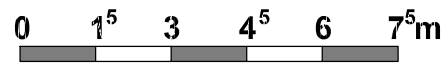


Schnitt B-B 1:150





Südostfassade 1:150



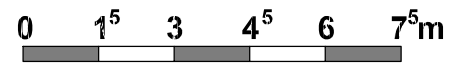


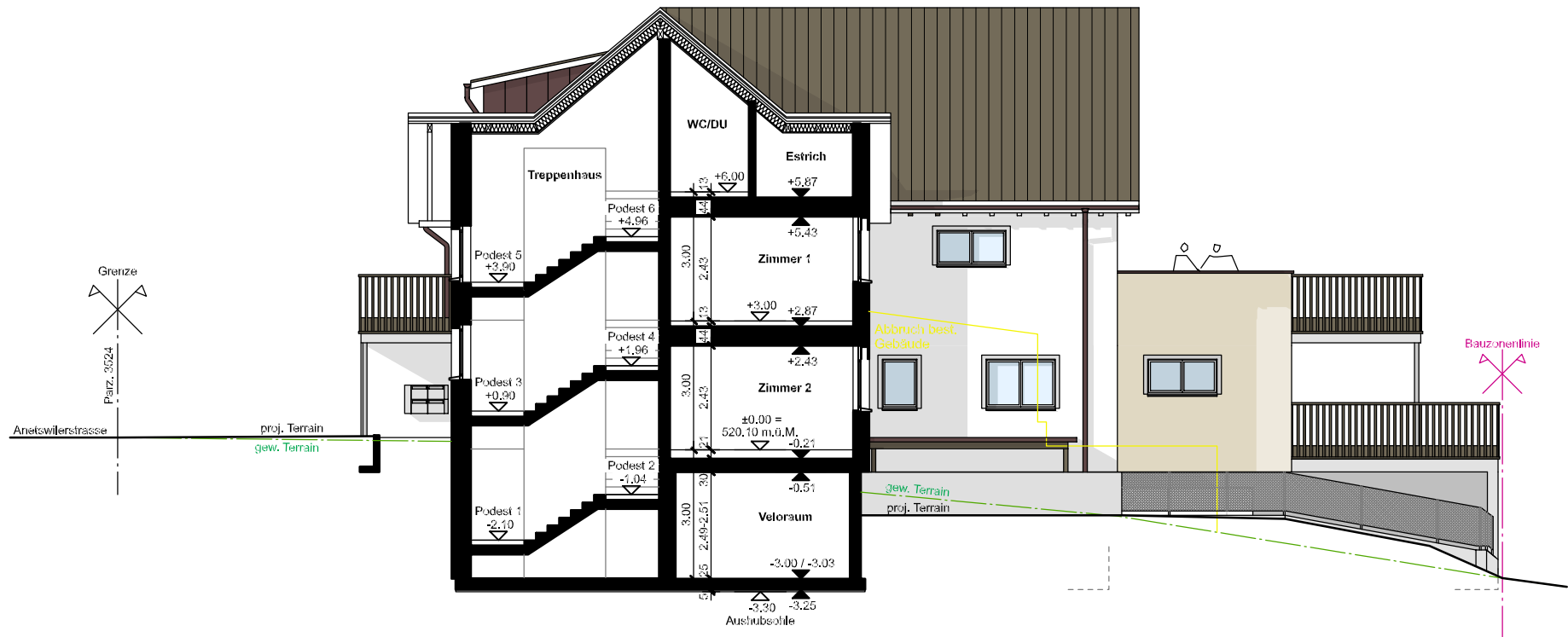
Südwestfassade 1:150





Nordwestfassade 1:150





Nordostfassade 1:150

