



**Neubau Doppelhaus B
Parz. Nr. 471, Wilerstrasse
9542 Münchwilen**



9553 bettwiesen
071/ 911 19 60
info@baumeier.ch
www.baumeier.ch

generalunternehmung

Variante 1
15. Februar 2022 / mm



Süd Perspektive



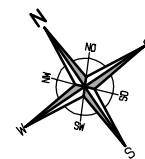
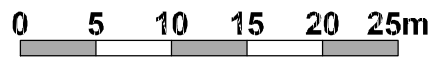
2

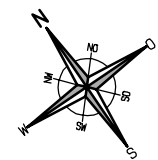
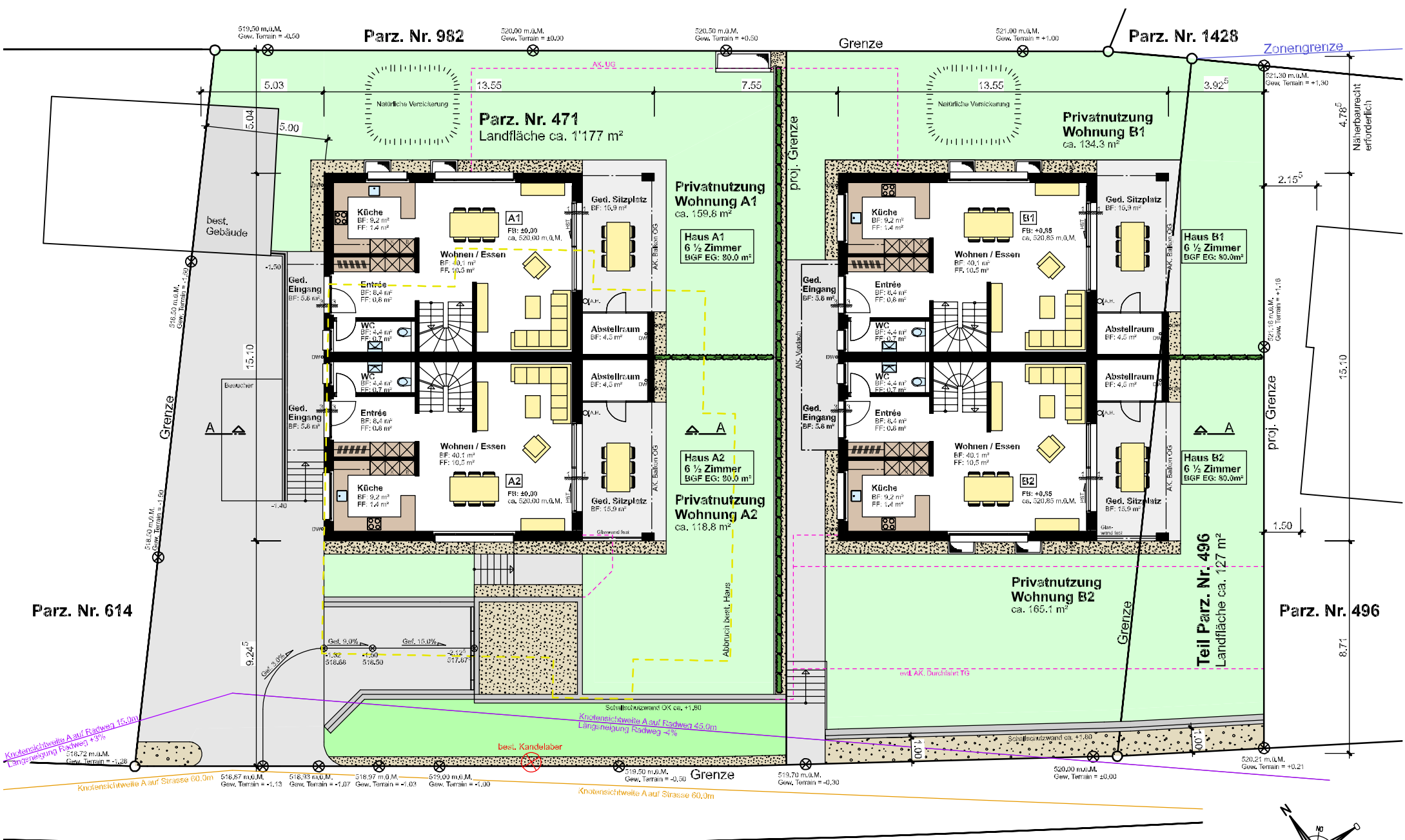


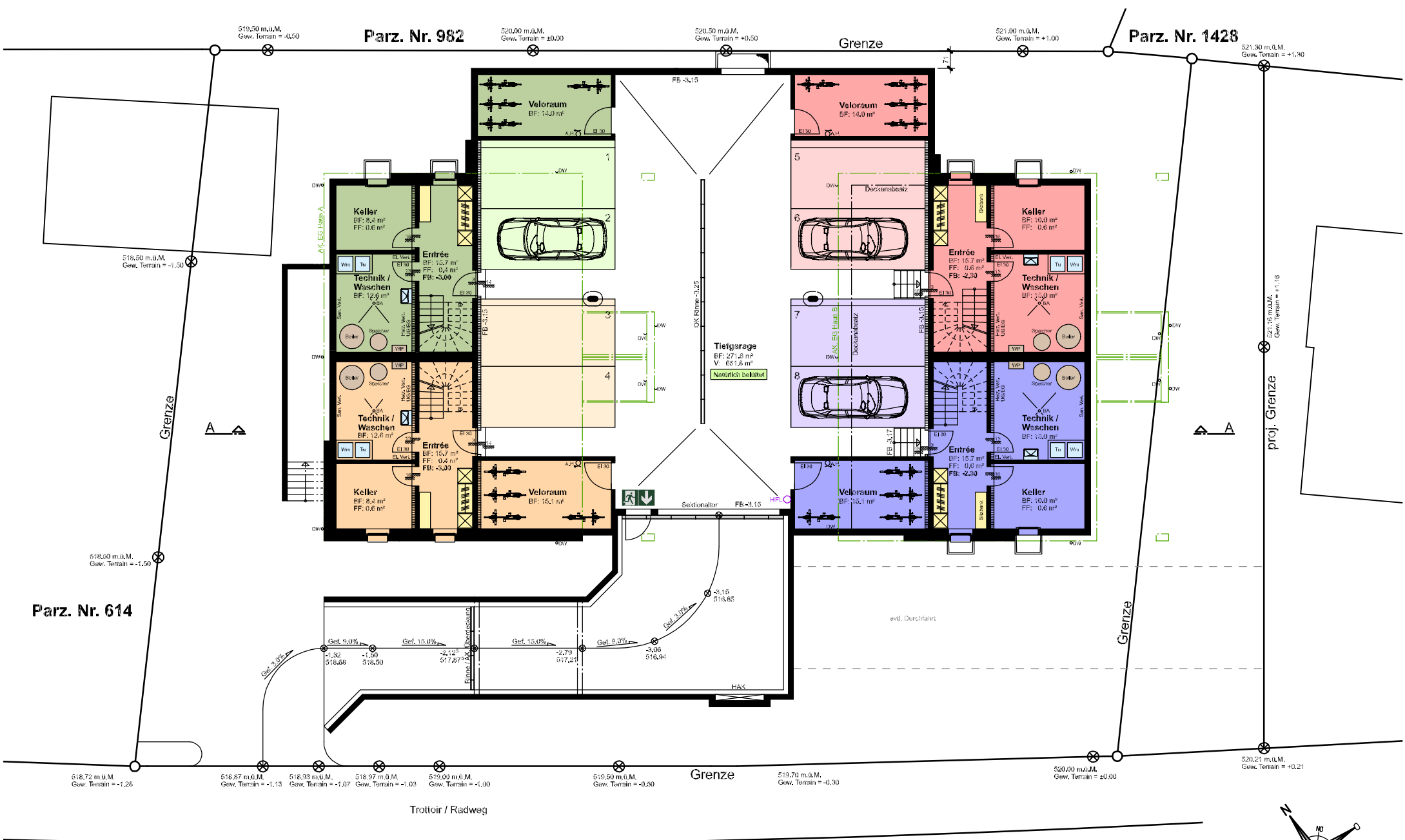
West Perspektive



Situation Haus A und B 1:500







Parz. Nr. 614

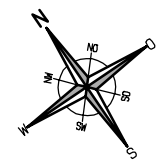
Parz. Nr. 982

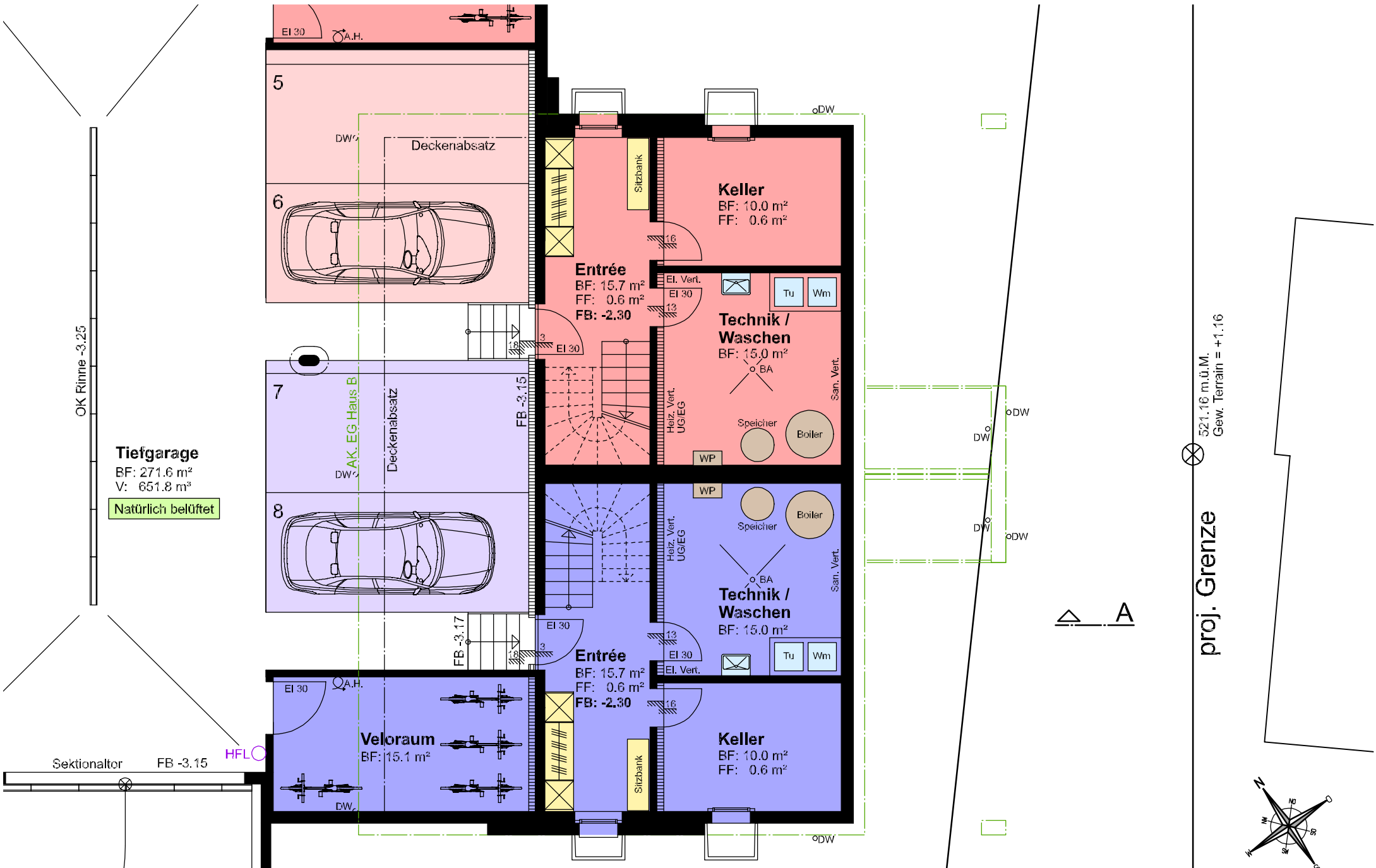
Parz. Nr. 1428

Trottoir / Radweg

Wilerstrasse

Tiefgarage / UG Haus A und B 1:200





OK Rinne -3.25

Tiefgarage
 BF: 271.6 m²
 V: 651.8 m³
 Natürlich belüftet

Sektionaltor FB -3.15

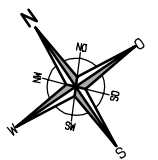
HFLO

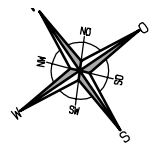
Untergeschoss Haus B 1:100



521.16 m.ü.M.
 Gew. Terrain = +1.16

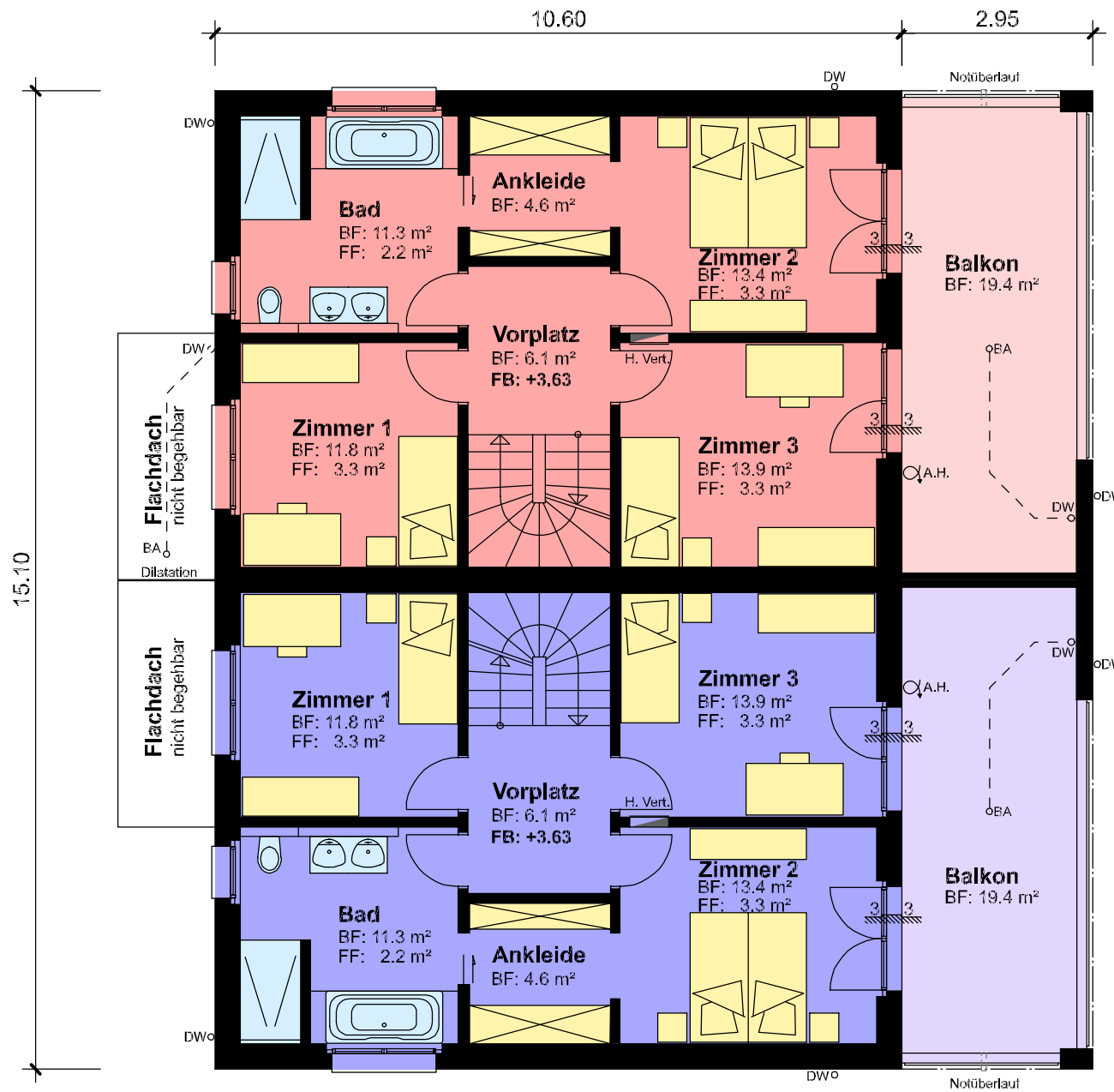
proj. Grenze





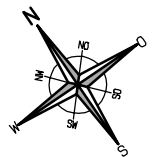
Erdgeschoss Haus B 1:100





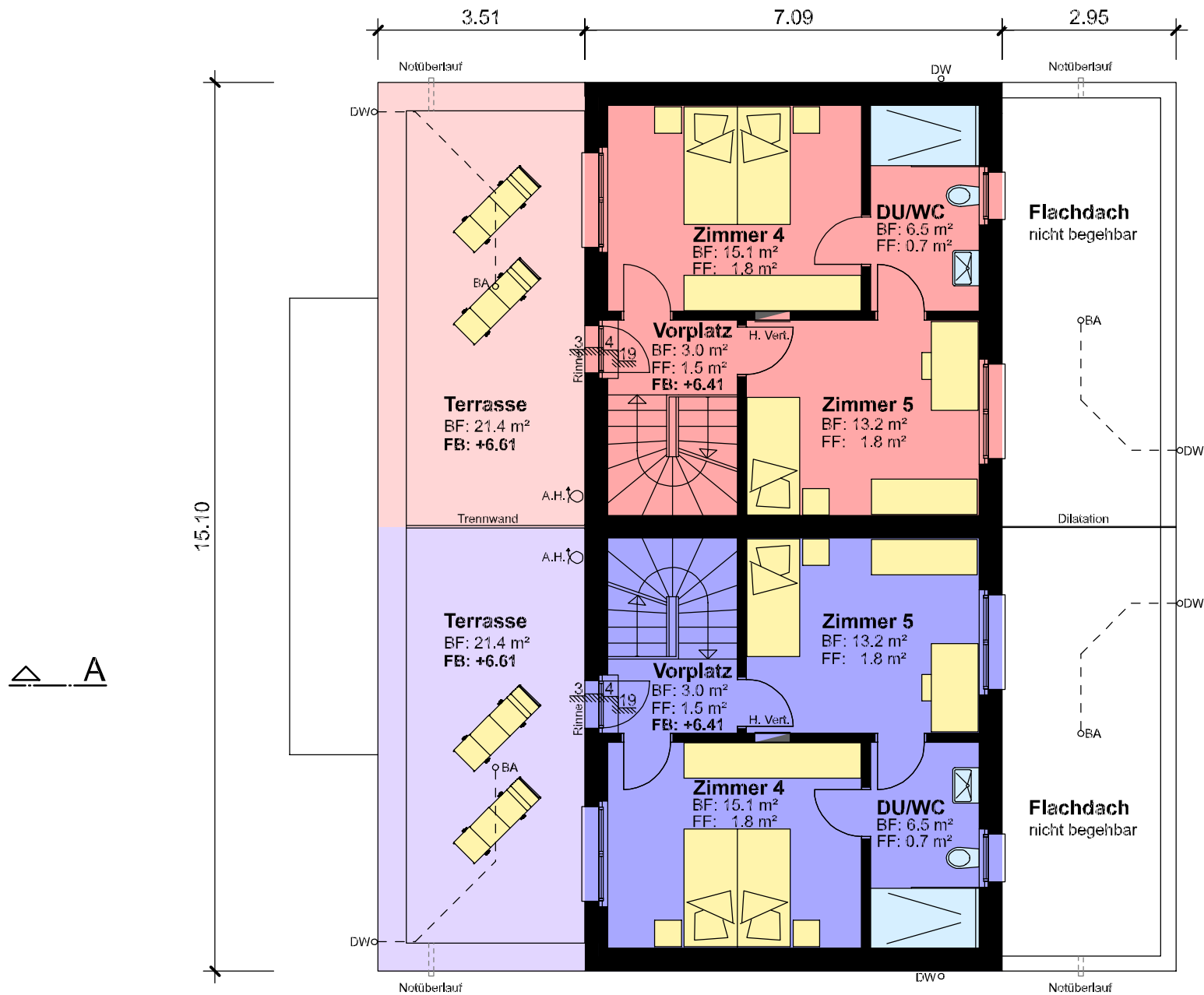
Haus B1
 6 ½ Zimmer
 BGF OG: 80.0 m²

Haus B2
 6 ½ Zimmer
 BGF OG: 80.0 m²



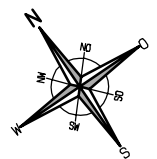
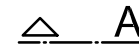
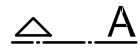
Obergeschoss Haus B 1:100





Haus B1
 6 ½ Zimmer
 BGF AG: 49.0 m²

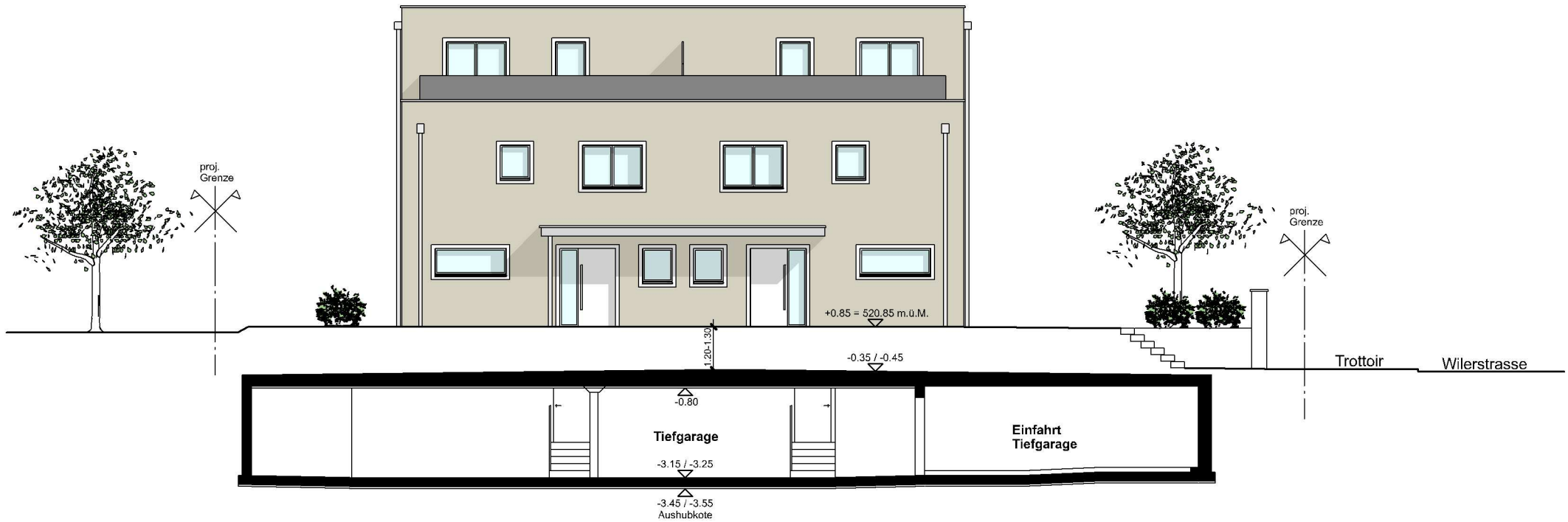
Haus B2
 6 ½ Zimmer
 BGF AG: 49.0 m²



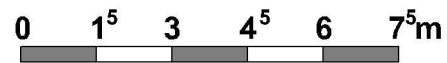


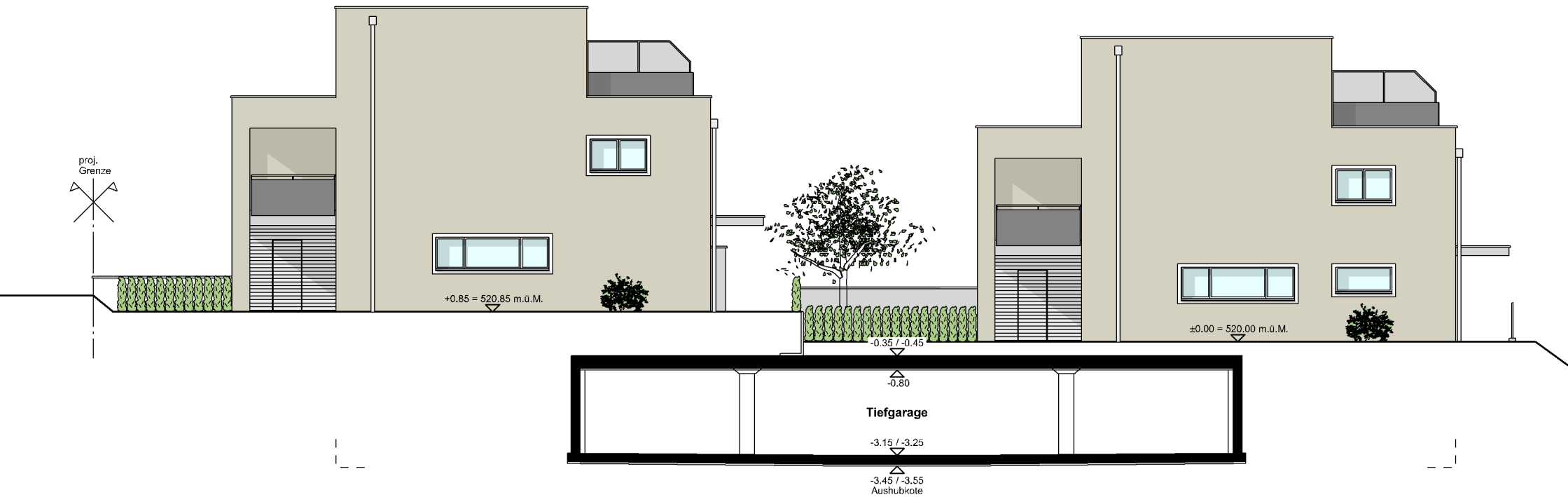
Schnitt A-A Haus B 1:100





Nordwestfassade Haus B 1:150



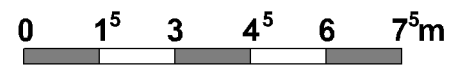


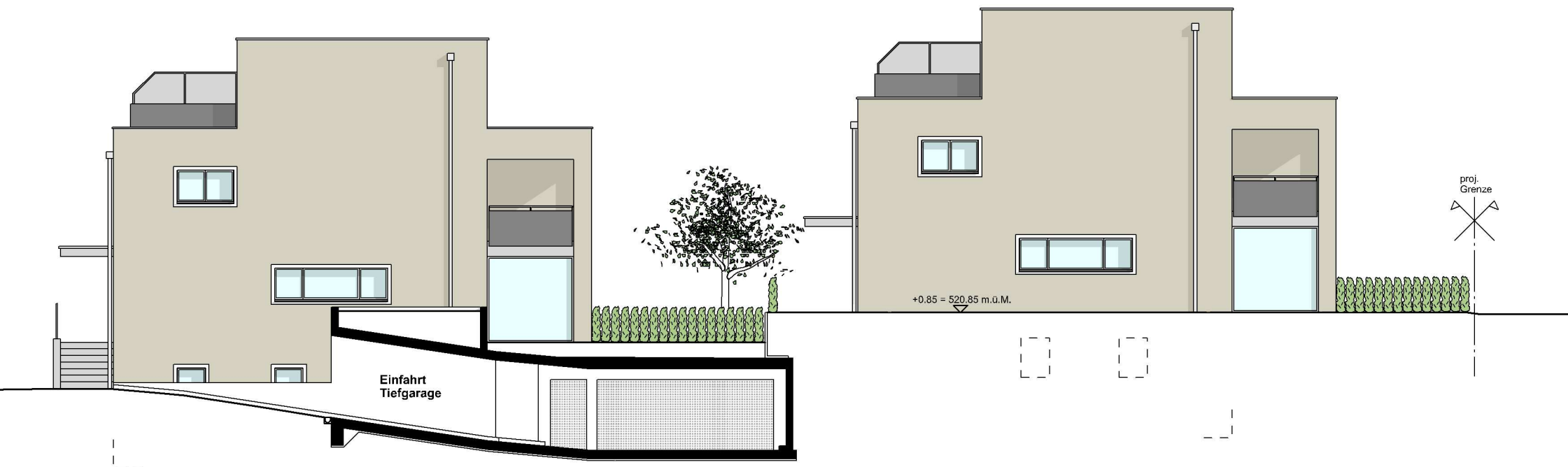
Nordostfassade Haus B 1:150





Südostfassade Haus B 1:150





Südwestfassade Haus B 1:150

