



**Neubau Doppelhaus A
Parz. Nr. 471, Wilerstrasse
9542 Münchwilen**



9553 bettwiesen
071/ 911 19 60
info@baumeier.ch
www.baumeier.ch

generalunternehmung

Variante 1
15. Februar 2022 / mm



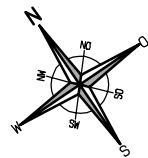
Süd Perspektive



Ost Perspektive

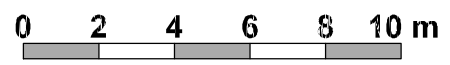
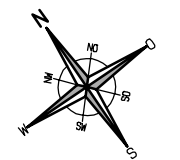
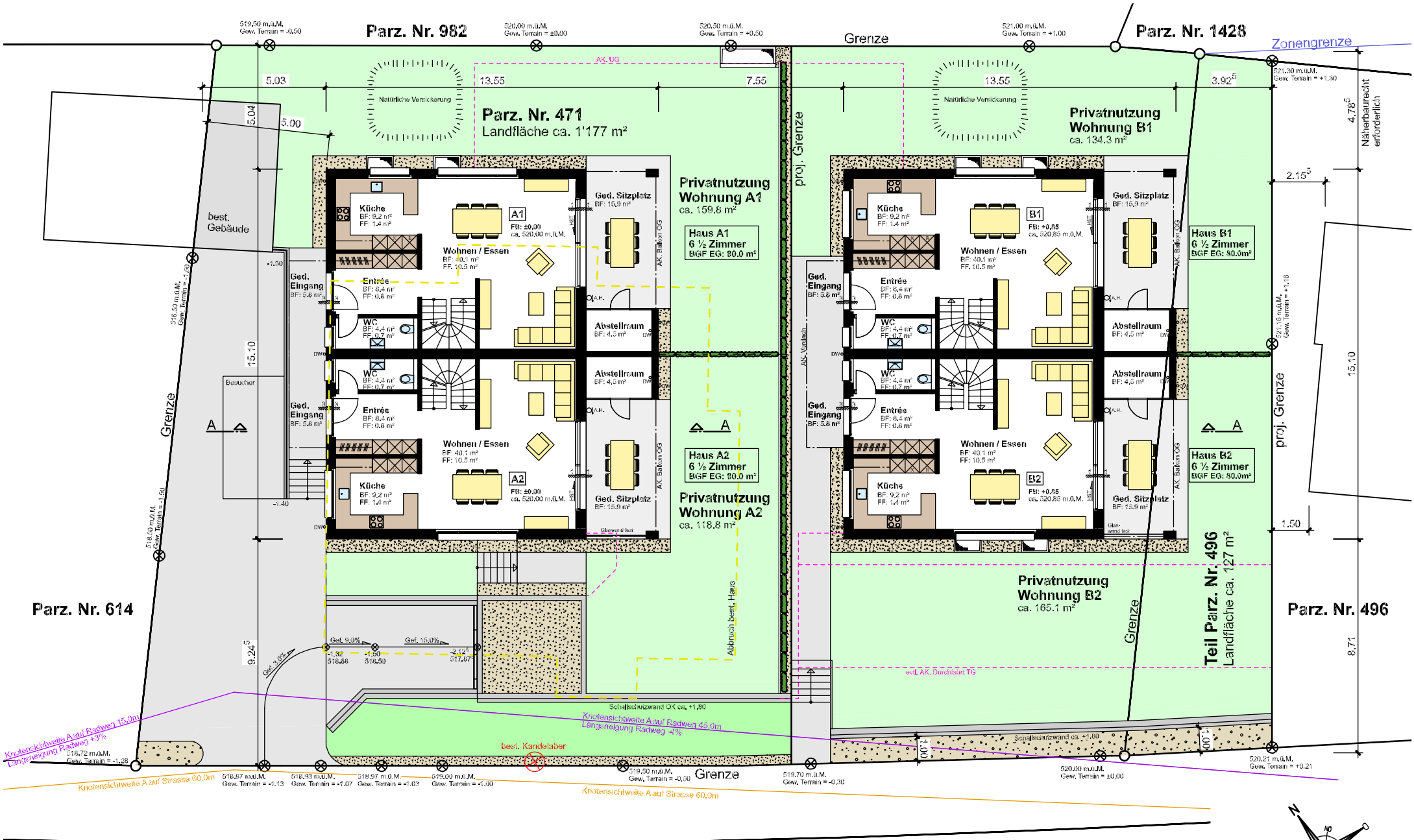


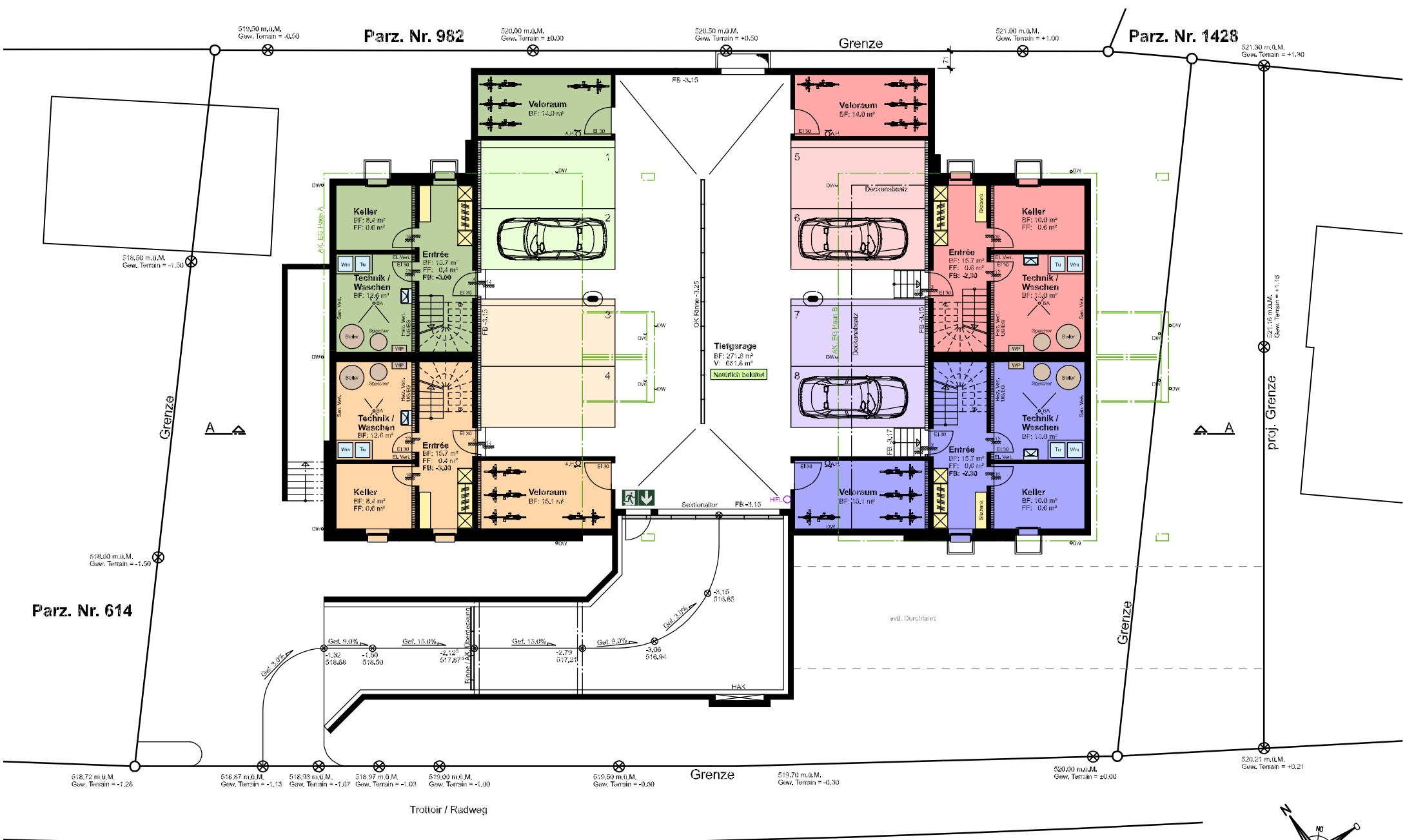
3



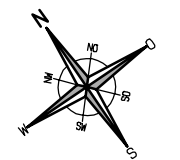
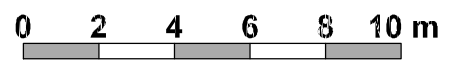
Situation Haus A und B 1:500

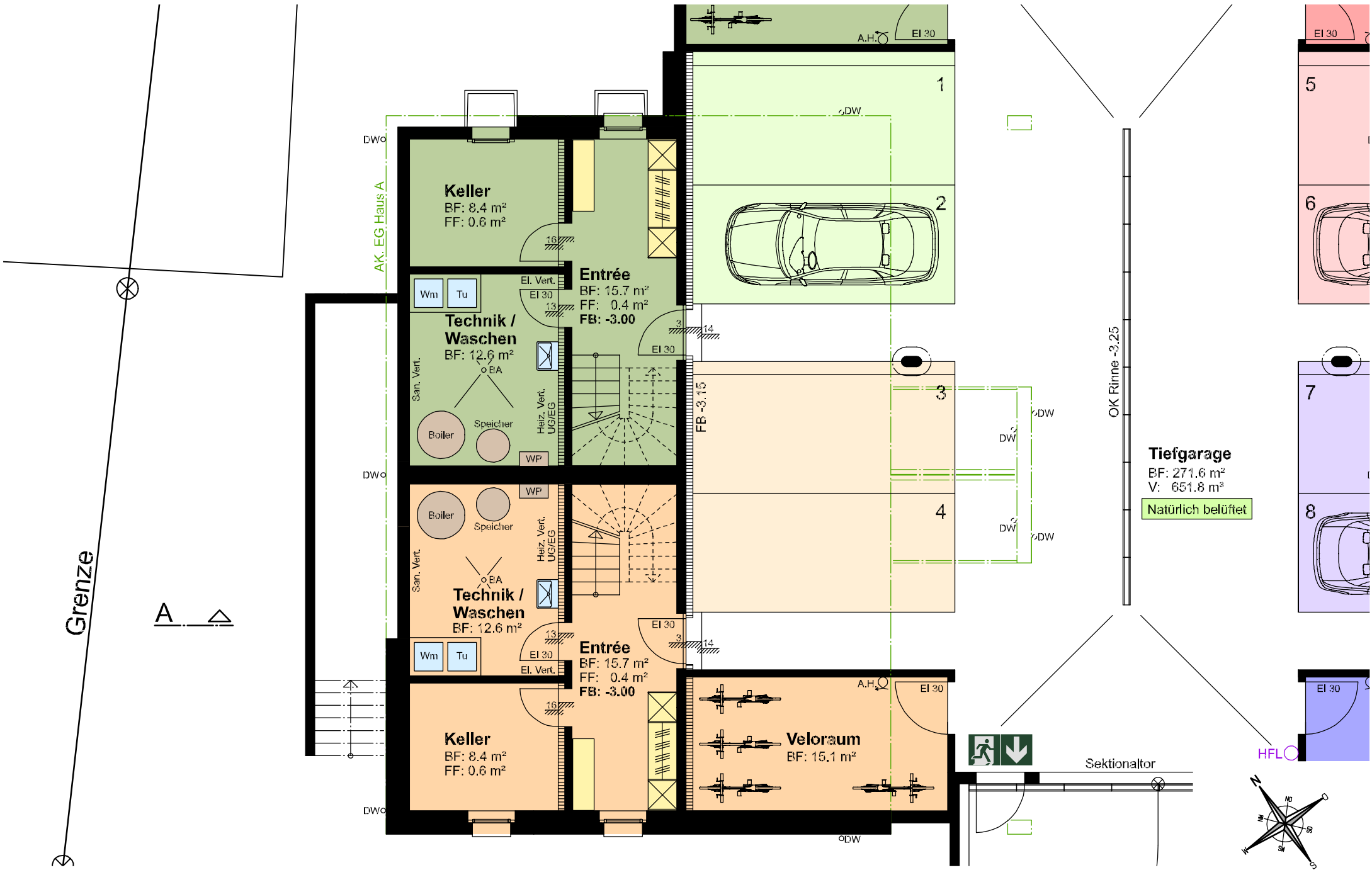




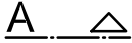


Tiefgarage / UG Haus A und B 1:200





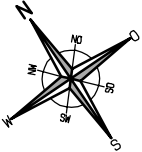
Grenze

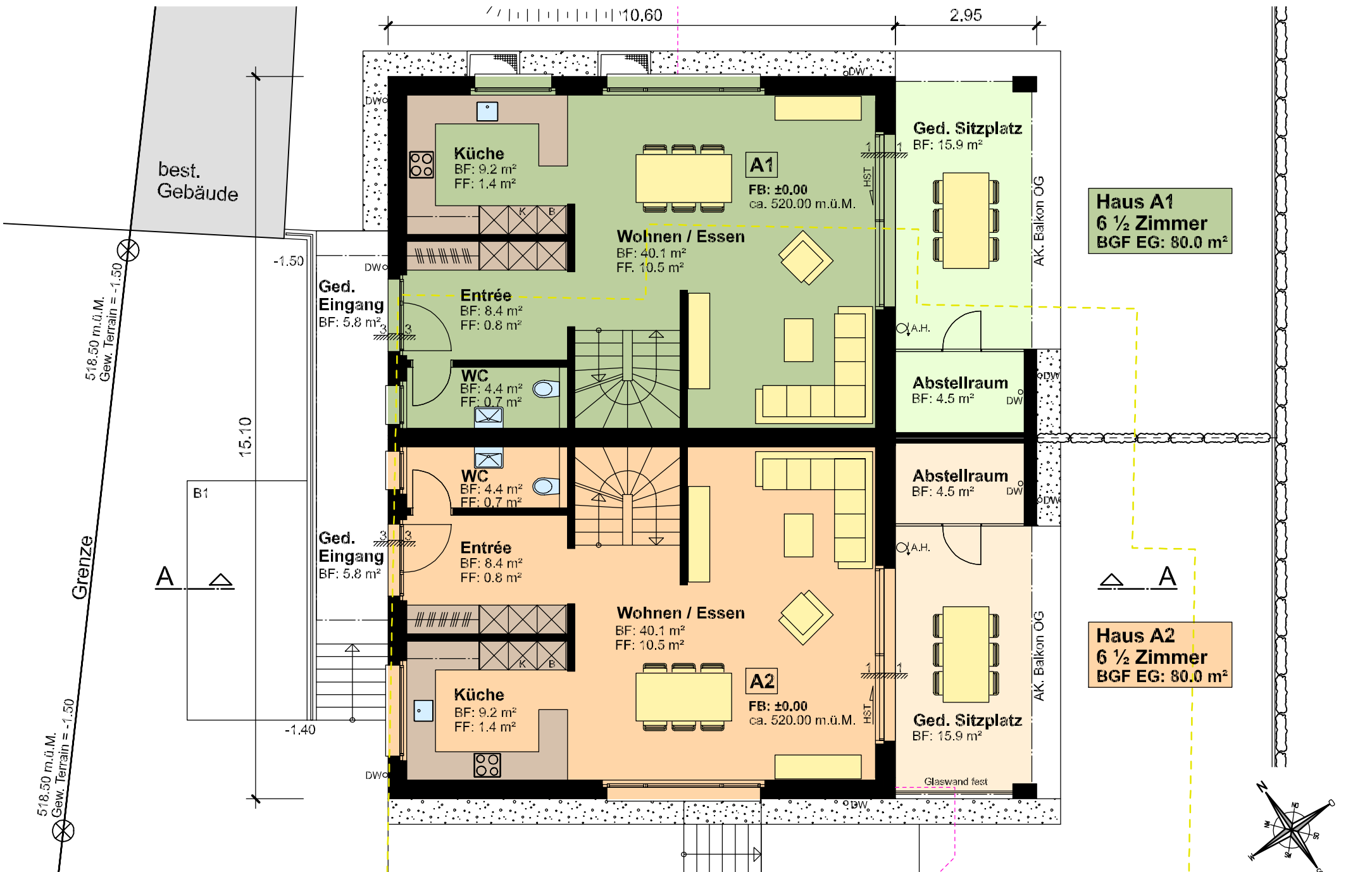


Untergeschoss Haus A 1:100

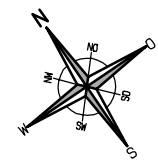


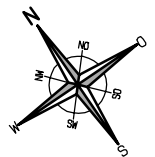
Tiefgarage
 BF: 271.6 m²
 V: 651.8 m³
 Natürlich belüftet





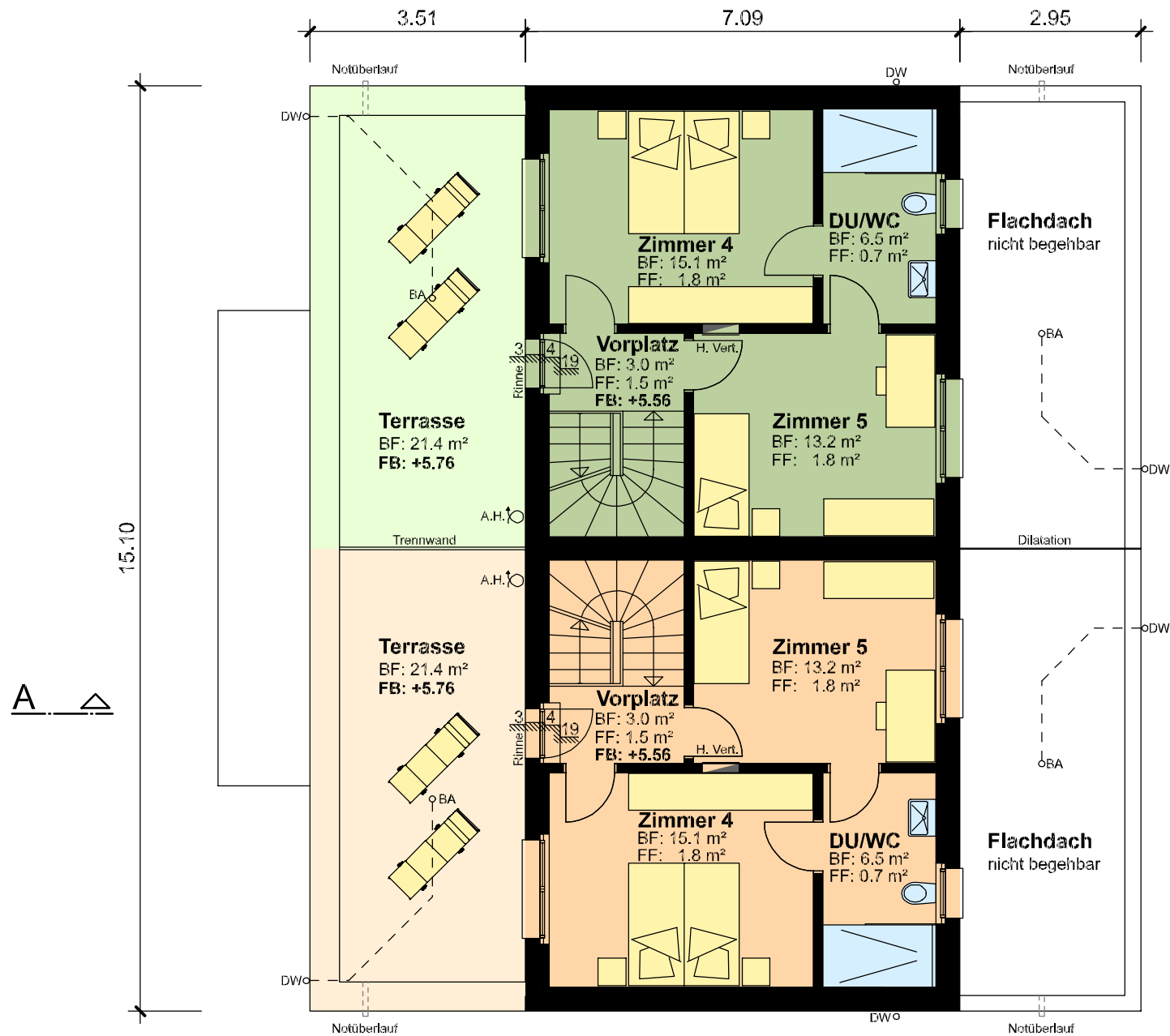
Erdgeschoss Haus A 1:100





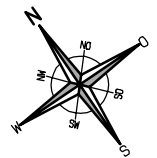
Obergeschoss Haus A 1:100

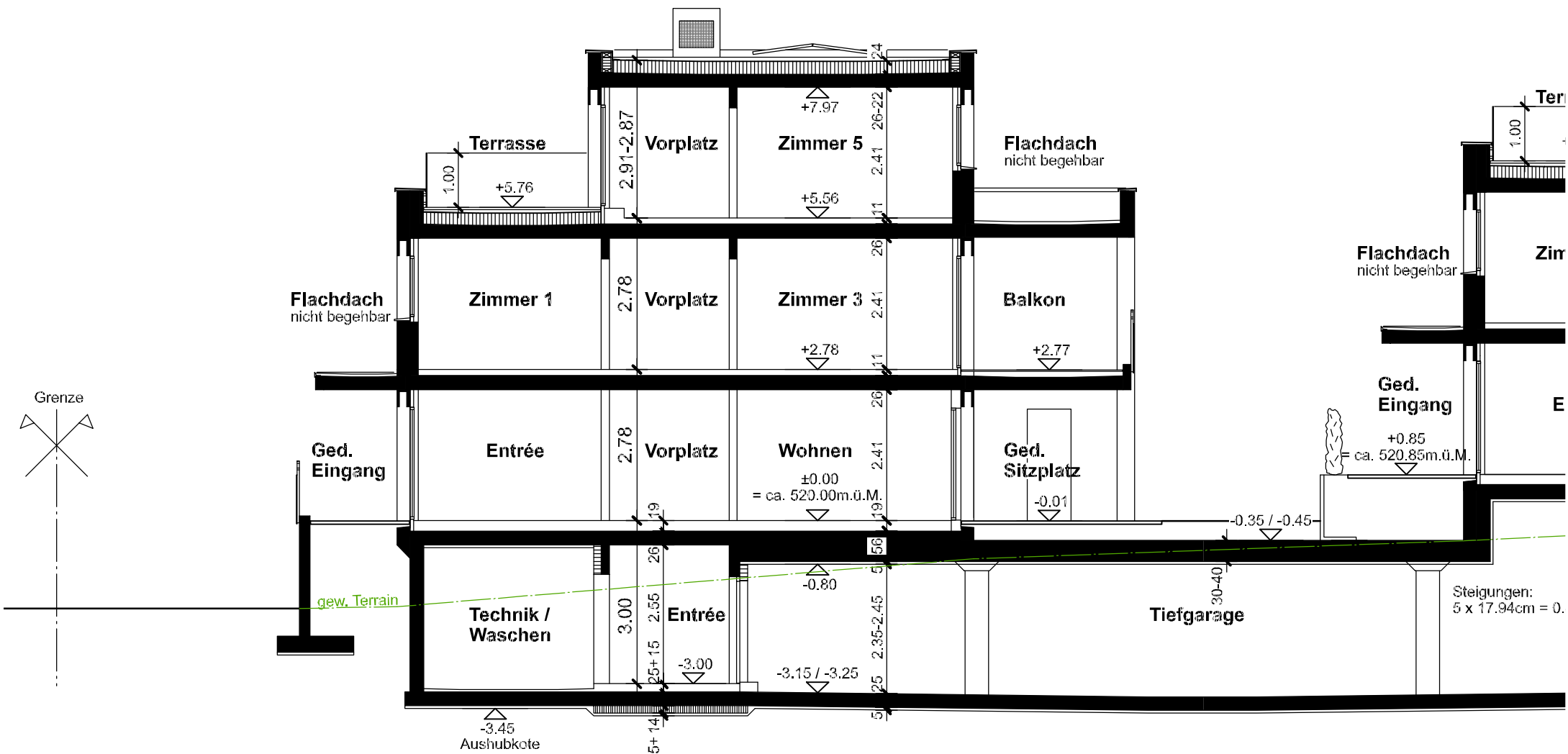




Haus A1
 6 ½ Zimmer
 BGF AG: 49.0 m²

Haus A2
 6 ½ Zimmer
 BGF AG: 49.0 m²





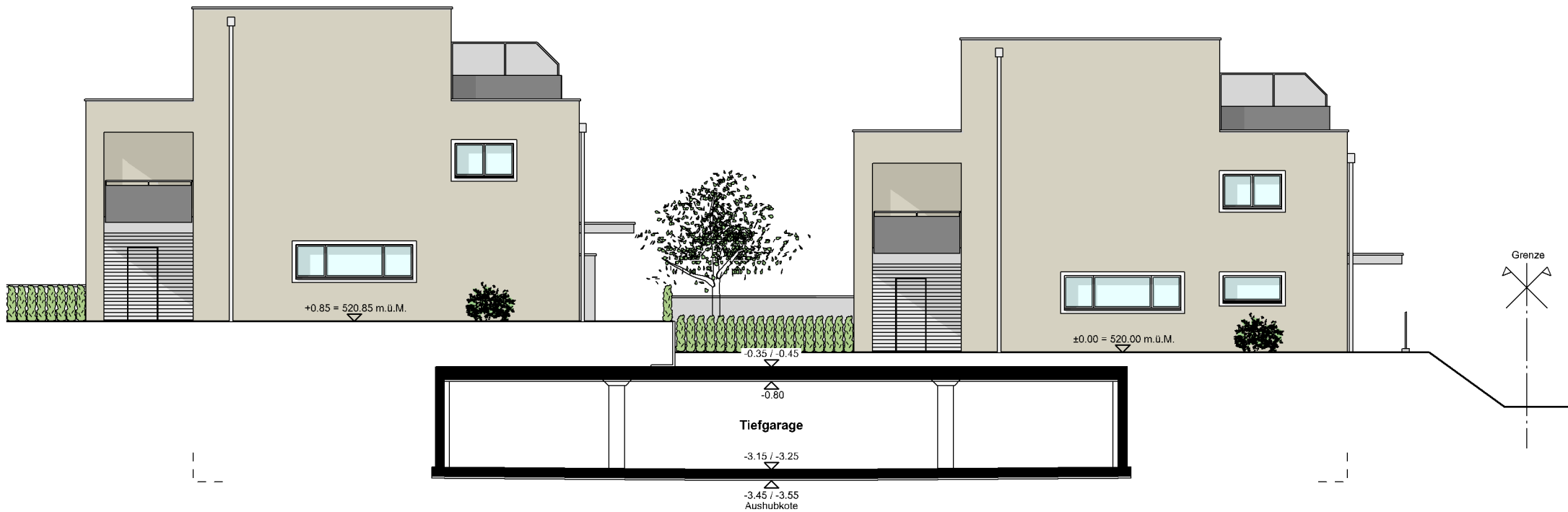
Schnitt A-A Haus A 1:100



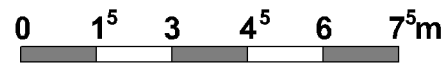


Nordwestfassade Haus A 1:150





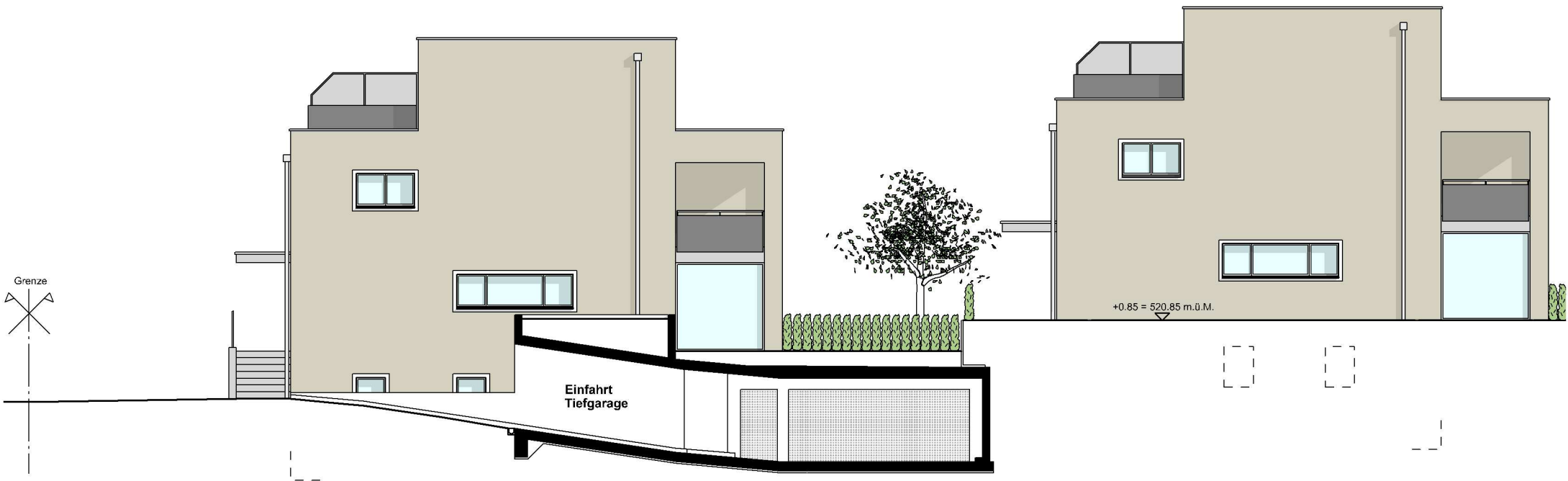
Nordostfassade Haus A 1:150





Südostfassade Haus A 1:150





Südwestfassade Haus A 1:150

